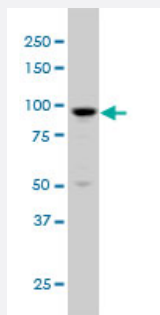


ARHGAP6 monoclonal antibody (M01), clone 6B3

Catalog # H00000395-M01

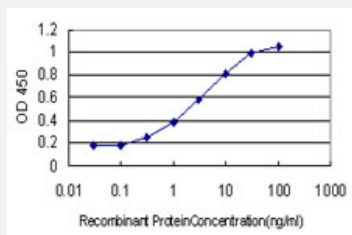
Size 100 ug

Applications



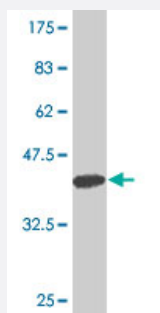
Western Blot (Cell lysate)

ARHGAP6 monoclonal antibody (M01), clone 6B3 Western Blot analysis of ARHGAP6 expression in K-562 (Cat # L009V1).



Sandwich ELISA (Recombinant protein)

Detection limit for recombinant GST tagged ARHGAP6 is approximately 0.3ng/ml as a capture antibody.



Western Blot detection against Immunogen (37.4 KDa) .

Specification

Product Description

Mouse monoclonal antibody raised against a partial recombinant ARHGAP6.

Immunogen	ARHGAP6 (NP_038286, 531 a.a. ~ 636 a.a) partial recombinant protein with GST tag. MW of the GST tag alone is 26 KDa.
Sequence	RHADDNISKDQGQEVGTGNKMTSLNLTATIFGPNLLHKQKSSDKEFSVQSSARAEESTAIIVVQKMIE NYEALFMVPPDLQNEVLISLLETDPDVVDYLLRRKASQSS
Host	Mouse
Reactivity	Human
Interspecies Antigen Sequence	Mouse (98)
Isotype	IgG2a Kappa
Quality Control Testing	Antibody Reactive Against Recombinant Protein. Western Blot detection against Immunogen (37.4 KDa) .
Storage Buffer	In 1x PBS, pH 7.4
Storage Instruction	Store at -20°C or lower. Aliquot to avoid repeated freezing and thawing.

Applications

- Western Blot (Cell lysate)

ARHGAP6 monoclonal antibody (M01), clone 6B3 Western Blot analysis of ARHGAP6 expression in K-562 (Cat # L009V1).

[Protocol Download](#)

- Western Blot (Recombinant protein)

[Protocol Download](#)

- Sandwich ELISA (Recombinant protein)

Detection limit for recombinant GST tagged ARHGAP6 is approximately 0.3ng/ml as a capture antibody.

[Protocol Download](#)

- ELISA

Gene Info — ARHGAP6

Entrez GeneID [395](#)

GeneBank Accession#	NM_013427
Protein Accession#	NP_038286
Gene Name	ARHGAP6
Gene Alias	RHOGAP6, RHOGAPX-1
Gene Description	Rho GTPase activating protein 6
Omim ID	300118
Gene Ontology	Hyperlink
Gene Summary	This gene encodes a member of the rhoGAP family of proteins which play a role in the regulation of actin polymerization at the plasma membrane during several cellular processes. This protein is thought to have two independent functions, one as a GTPase-activating protein with specificity for RhoA, and another as a cytoskeletal protein that promotes actin remodeling. Multiple alternatively spliced transcript variants encoding different isoforms have been found for this gene. [provided by RefSeq]
Other Designations	OTTHUMP00000022913 OTTHUMP00000022915 OTTHUMP00000022916 OTTHUMP00000022918 Rho-type GTPase-activating protein RhoGAPX-1

Publication Reference

- [Genetic screening in C. Elegans identifies rho- GTPase activating protein 6 as novel HERG regulator.](#)

Potet F, Petersen CI, Boutaud O, Shuai W, Stepanovic SZ, Balser JR, Kupersmidt S.

Journal of Molecular and Cellular Cardiology 2008 Nov; 46(2):257.

Application: IF, WB, Mouse, Mouse atrial myocyte cell line HL-1 cells

Disease

- [Cardiovascular Diseases](#)
- [Diabetes Mellitus](#)
- [Edema](#)