

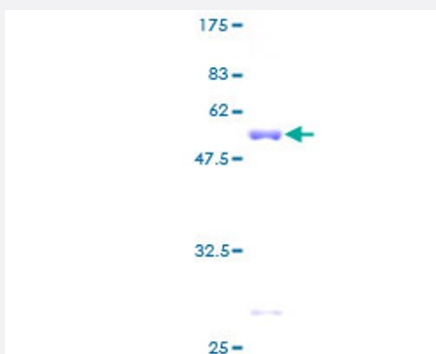
Full-Length

RND3 (Human) Recombinant Protein (P01)

Catalog # H00000390-P01

Size 25 ug, 10 ug

Applications



Specification

Product Description	Human RND3 full-length ORF (AAH12513, 1 a.a. - 244 a.a.) recombinant protein with GST-tag at N-terminal.
Sequence	MKERRASQKLSSKSIMDPNQNVKCKMVVGDSQCGKTALLHVFAKDCFPENYVPTVFENYTASF EIDTQRIELSLWDTSGSPYYDNVRPLSYDSDAVLICFDISRPETLDSVLKKWKGEIQEFCPNTKML LVGCKSDLRTDVSTLVELSNHRQTPVSYDQGANMAKQIGAATYIECSALQSENSVRDIFHVATLAC VNKTNKNVKNKSQRATKRISHMPSRPELSAVATDLRKDKAKSCTVM
Host	Wheat Germ (in vitro)
Theoretical MW (kDa)	52.58
Preparation Method	in vitro wheat germ expression system
Purification	Glutathione Sepharose 4 Fast Flow
Quality Control Testing	12.5% SDS-PAGE Stained with Coomassie Blue.
Storage Buffer	50 mM Tris-HCl, 10 mM reduced Glutathione, pH=8.0 in the elution buffer.
Storage Instruction	Store at -80°C. Aliquot to avoid repeated freezing and thawing.
Note	Best use within three months from the date of receipt of this protein.

Applications

- Enzyme-linked Immunoabsorbent Assay
- Western Blot (Recombinant protein)
- Antibody Production
- Protein Array

Gene Info — RND3

Entrez GeneID [390](#)

GeneBank Accession# [BC012513](#)

Protein Accession# [AAH12513](#)

Gene Name RND3

Gene Alias ARHE, Rho8, RhoE, memB

Gene Description Rho family GTPase 3

Omim ID [602924](#)

Gene Ontology [Hyperlink](#)

Gene Summary Members of the Rho family of Ras-related GTPases, such as ARHE, regulate the organization of the actin cytoskeleton in response to extracellular growth factors. Like Ras (MIM 190020), Rho family members appear to cycle between an inactive GDP-bound form and an active GTP-bound form. Three major regulators of Rho activity have been identified: RhoGDIs, which interact with the GDP-bound Rho proteins to keep them in a resting complex (see MIM 601925); GEFs, which promote GDP/GTP exchange leading to activation of Rho proteins (see MIM 601855); and GAPs, which stimulate GTP hydrolysis and return the activated Rho protein to its inactive form (see MIM 602680) (Nobes et al., 1998 [PubMed 9531558]).[supplied by OMIM]

Other Designations OTTHUMP00000162685|ras homolog gene family, member E|small GTP binding protein Rho8