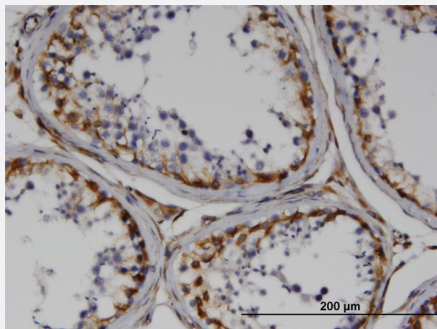


RND3 monoclonal antibody (M01), clone 1D2

Catalog # H00000390-M01

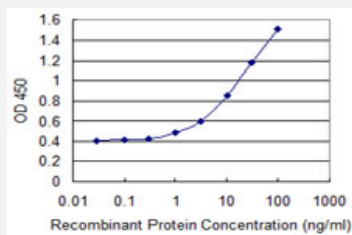
Size 100 ug

Applications



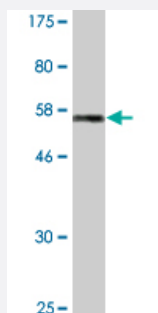
Immunohistochemistry (Formalin/PFA-fixed paraffin-embedded sections)

Immunoperoxidase of monoclonal antibody to RND3 on formalin-fixed paraffin-embedded human testis. [antibody concentration 3 ug/ml]



Sandwich ELISA (Recombinant protein)

Detection limit for recombinant GST tagged RND3 is 0.3 ng/ml as a capture antibody.



Western Blot detection against Immunogen (52.58 KDa) .

Specification

Product Description

Mouse monoclonal antibody raised against a full-length recombinant RND3.

Immunogen	RND3 (AAH12513, 1 a.a. ~ 244 a.a) full-length recombinant protein with GST tag. MW of the GST tag alone is 26 KDa.
Sequence	MKERRASQKLSSKSIMDPNQNVKCKMVVGDSQCGKTALLHVFAKDCFPENYVPTVFENYTASF EIDTQRIELSLWDTSGSPYYDNVRPLSYDSDAVLICFDIRPETLDSVLKKWKGEIQEFCPNTKML LVGCKSDLRTDVSTLVELSNHRQTPVSYDQGANMAKQIGAATYIECSALQSENSVRDIFHVATLAC VNKTNKNVKNKNSQRATKRISHMPSPRPELSAVATDLRKDKAKSCTVM
Host	Mouse
Reactivity	Human
Isotype	IgG2a Kappa
Quality Control Testing	Antibody Reactive Against Recombinant Protein. Western Blot detection against Immunogen (52.58 KDa) .
Storage Buffer	In 1x PBS, pH 7.4
Storage Instruction	Store at -20°C or lower. Aliquot to avoid repeated freezing and thawing.

Applications

- Western Blot (Recombinant protein)

[Protocol Download](#)

- Immunohistochemistry (Formalin/PFA-fixed paraffin-embedded sections)

Immunoperoxidase of monoclonal antibody to RND3 on formalin-fixed paraffin-embedded human testis. [antibody concentration 3 ug/ml]

[Protocol Download](#)

- Sandwich ELISA (Recombinant protein)

Detection limit for recombinant GST tagged RND3 is 0.3 ng/ml as a capture antibody.

[Protocol Download](#)

- ELISA

Gene Info — RND3

Entrez GeneID [390](#)

GeneBank Accession#	BC012513
Protein Accession#	AAH12513
Gene Name	RND3
Gene Alias	ARHE, Rho8, RhoE, memB
Gene Description	Rho family GTPase 3
Omim ID	602924
Gene Ontology	Hyperlink
Gene Summary	<p>Members of the Rho family of Ras-related GTPases, such as ARHE, regulate the organization of the actin cytoskeleton in response to extracellular growth factors. Like Ras (MIM 190020), Rho family members appear to cycle between an inactive GDP-bound form and an active GTP-bound form. Three major regulators of Rho activity have been identified: RhoGDIs, which interact with the GDP-bound Rho proteins to keep them in a resting complex (see MIM 601925); GEFs, which promote GDP/GTP exchange leading to activation of Rho proteins (see MIM 601855); and GAPs, which stimulate GTP hydrolysis and return the activated Rho protein to its inactive form (see MIM 602680) (Nobes et al., 1998 [PubMed 9531558]).[supplied by OMIM]</p>
Other Designations	OTTHUMP00000162685 ras homolog gene family, member E small GTP binding protein Rho8