

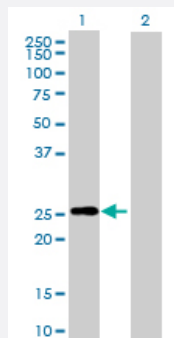
MaxPab®

RND3 purified MaxPab mouse polyclonal antibody (B02P)

Catalog # H00000390-B02P

Size 50 ug

Applications



Western Blot (Transfected lysate)

Western Blot analysis of RND3 expression in transfected 293T cell line ([H00000390-T02](#)) by RND3 MaxPab polyclonal antibody.

Lane 1: RND3 transfected lysate(26.84 KDa).

Lane 2: Non-transfected lysate.

Specification

Product Description	Mouse polyclonal antibody raised against a full-length human RND3 protein.
Immunogen	RND3 (NP_005159.1, 1 a.a. ~ 244 a.a) full-length human protein.
Sequence	MKERRASQKLSSKSIMDPNQNVKCKMVGDSQCGKTALLHVFAKDCFPENYVPTVFENYTASF EIDTQRIELSLWDTSGSPYYDNVRPLSYPDSDAVLICFDISRPETLDSVLKKWKGEIQEFCPNTKML LVGCKSDLRTDVSTLVELSNHRQTPVSYDQGANMAKQIGAATYIECSALQSENSVRDIFHVATLAC VNKTNKNVKNKSQRATKRISHMPSRPELSAVATDLRKDKAKSCTVM
Host	Mouse
Reactivity	Human
Quality Control Testing	Antibody reactive against mammalian transfected lysate.
Storage Buffer	In 1x PBS, pH 7.4
Storage Instruction	Store at -20°C or lower. Aliquot to avoid repeated freezing and thawing.

Applications

- Western Blot (Transfected lysate)

Western Blot analysis of RND3 expression in transfected 293T cell line ([H00000390-T02](#)) by RND3 MaxPab polyclonal antibody.

Lane 1: RND3 transfected lysate(26.84 KDa).

Lane 2: Non-transfected lysate.

[Protocol Download](#)

Gene Info — RND3

Entrez GeneID [390](#)

GeneBank Accession# [NM_005168](#)

Protein Accession# [NP_005159.1](#)

Gene Name RND3

Gene Alias ARHE, Rho8, RhoE, memB

Gene Description Rho family GTPase 3

Omim ID [602924](#)

Gene Ontology [Hyperlink](#)

Gene Summary Members of the Rho family of Ras-related GTPases, such as ARHE, regulate the organization of the actin cytoskeleton in response to extracellular growth factors. Like Ras (MIM 190020), Rho family members appear to cycle between an inactive GDP-bound form and an active GTP-bound form. Three major regulators of Rho activity have been identified: RhoGDIs, which interact with the GDP-bound Rho proteins to keep them in a resting complex (see MIM 601925); GEFs, which promote GDP/GTP exchange leading to activation of Rho proteins (see MIM 601855); and GAPs, which stimulate GTP hydrolysis and return the activated Rho protein to its inactive form (see MIM 602680) (Nobes et al., 1998 [PubMed 9531558]).[supplied by OMIM]

Other Designations OTTHUMP00000162685[ras homolog gene family, member E]small GTP binding protein Rho8