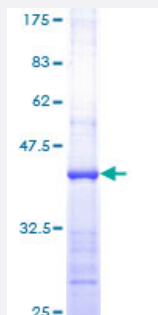


RHOC (Human) Recombinant Protein (Q01)

Catalog # H00000389-Q01

Size 25 ug, 10 ug

Applications



Specification

Product Description	Human RHOC partial ORF (NP_786886, 91 a.a. - 190 a.a.) recombinant protein with GST-tag at N-terminal.
Sequence	SLENIPEKWTPEVKHFPCNPVPIILVGNKKDLRQDEHTRRELAKMKQEPVRSEEGRDMANRISAFGYLECSAKTKEGVREVFEMATRAGLQVRKNKRRRG
Host	Wheat Germ (in vitro)
Theoretical MW (kDa)	36.74
Interspecies Antigen Sequence	Mouse (100); Rat (100)
Preparation Method	in vitro wheat germ expression system
Purification	Glutathione Sepharose 4 Fast Flow
Quality Control Testing	12.5% SDS-PAGE Stained with Coomassie Blue.
Storage Buffer	50 mM Tris-HCl, 10 mM reduced Glutathione, pH=8.0 in the elution buffer.
Storage Instruction	Store at -80°C. Aliquot to avoid repeated freezing and thawing.
Note	Best use within three months from the date of receipt of this protein.

Applications

- Enzyme-linked Immunoabsorbent Assay
- Western Blot (Recombinant protein)
- Antibody Production
- Protein Array

Gene Info — RHOC

Entrez GeneID [389](#)

GeneBank Accession# [NM_175744](#)

Protein Accession# [NP_786886](#)

Gene Name RHOC

Gene Alias ARH9, ARHC, H9, MGC1448, MGC61427, RHOH9

Gene Description ras homolog gene family, member C

Omim ID [165380](#)

Gene Ontology [Hyperlink](#)

Gene Summary This gene encodes a member of the Rho family of small GTPases, which cycle between inactive GDP-bound and active GTP-bound states and function as molecular switches in signal transduction cascades. Rho proteins promote reorganization of the actin cytoskeleton and regulate cell shape, attachment, and motility. The protein encoded by this gene is prenylated at its C-terminus, and localizes to the cytoplasm and plasma membrane. It is thought to be important in cell locomotion. Overexpression of this gene is associated with tumor cell proliferation and metastasis. Multiple alternatively spliced variants, encoding the same protein, have been identified. [provided by RefSeq]

Other Designations OTTHUMP00000013675|OTTHUMP00000013676|OTTHUMP00000013802|OTTHUMP00000013805|OTTHUMP00000013807|OTTHUMP00000013809|RAS-related homolog 9|Rho-related GTP-binding protein RhoC|oncogene RHO H9|rhoC GTPase|small GTP binding protein RhoC

Disease

- [Angina Pectoris](#)

- [Breast cancer](#)
- [Breast Neoplasms](#)
- [Coronary Vasospasm](#)
- [Genetic Predisposition to Disease](#)
- [HIV Infections](#)