

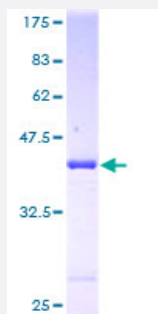
Full-Length

ARF6 (Human) Recombinant Protein (P01)

Catalog # H00000382-P01

Size 25 ug, 10 ug

Applications



Specification

Product Description	Human ARF6 full-length ORF (AAH08918, 1 a.a. - 175 a.a.) recombinant protein with GST-tag at N-terminal.
Sequence	MGKVLISKIFGNKEMRILMLGLDAAGKTTILYKLKLGQSVTTIPTVGFNVETVYKNVKFNVWDVGGQDKIRPLWRHYTGTQGLIFVVDCAHDRDRIDEARQELHRIINDREMRDAILIFANKQDLPDAMKPHEIQEKLGLTRIRDRNWVYQPSCATSGDGLYEGLTWLTSNYKS
Host	Wheat Germ (in vitro)
Theoretical MW (kDa)	44.99
Preparation Method	in vitro wheat germ expression system
Purification	Glutathione Sepharose 4 Fast Flow
Quality Control Testing	12.5% SDS-PAGE Stained with Coomassie Blue.
Storage Buffer	50 mM Tris-HCl, 10 mM reduced Glutathione, pH=8.0 in the elution buffer.
Storage Instruction	Store at -80°C. Aliquot to avoid repeated freezing and thawing.
Note	Best use within three months from the date of receipt of this protein.

Applications

- Enzyme-linked Immunoabsorbent Assay
- Western Blot (Recombinant protein)
- Antibody Production
- Protein Array

Gene Info — ARF6

Entrez GeneID [382](#)

GeneBank Accession# [BC008918](#)

Protein Accession# [AAH08918](#)

Gene Name ARF6

Gene Alias DKFZp564M0264

Gene Description ADP-ribosylation factor 6

Omim ID [600464](#)

Gene Ontology [Hyperlink](#)

Gene Summary This gene encodes a member of the human ARF gene family, which is part of the RAS superfamily. The ARF genes encode small guanine nucleotide-binding proteins that stimulate the ADP-ribosyltransferase activity of cholera toxin and play a role in vesicular trafficking and as activators of phospholipase D. The product of this gene is localized to the plasma membrane, and regulates vesicular trafficking, remodelling of membrane lipids, and signaling pathways that lead to actin remodeling. A pseudogene of this gene is located on chromosome 7. [provided by RefSeq]

Other Designations -

Pathway

- [Endocytosis](#)
- [Fc gamma R-mediated phagocytosis](#)