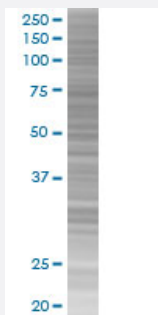


AREG 293T Cell Transient Overexpression Lysate(Denatured)

Catalog # H00000374-T02

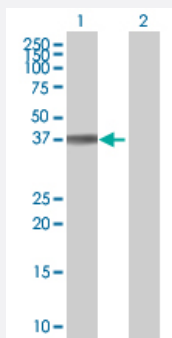
Size 100 uL

Applications



SDS-PAGE Gel

AREG transfected lysate.



Western Blot

Lane 1: AREG transfected lysate (27.83 KDa)

Lane 2: Non-transfected lysate.

Specification

Transfected Cell Line 293T

Plasmid pCMV-AREG full-length

Host Human

Theoretical MW (kDa) 27.83

Quality Control Testing Transient overexpression cell lysate was tested with Anti-AREG antibody ([H00000374-B02](#)) by Western Blots.
 SDS-PAGE Gel
 AREG transfected lysate.
 Western Blot
 Lane 1: AREG transfected lysate (27.83 KDa)
 Lane 2: Non-transfected lysate.

Storage Buffer

1X Sample Buffer (50 mM Tris-HCl, 2% SDS, 10% glycerol, 300 mM 2-mercaptoethanol, 0.01% Bromophenol blue)

Storage Instruction

Store at -80°C. Aliquot to avoid repeated freezing and thawing.

Applications

- Western Blot

Gene Info — AREG

Entrez GeneID[374](#)**GeneBank Accession#**[NM_001657.2](#)**Protein Accession#**[P08679](#)**Gene Name**

AREG

Gene Alias

AR, CRDGF, MGC13647, SDGF

Gene Description

amphiregulin

Omim ID[104640](#)**Gene Ontology**[Hyperlink](#)**Gene Summary**

The protein encoded by this gene is a member of the epidermal growth factor family. It is an autocrine growth factor as well as a mitogen for astrocytes, Schwann cells, and fibroblasts. It is related to epidermal growth factor (EGF) and transforming growth factor alpha (TGF-alpha). This protein interacts with the EGF/TGF-alpha receptor to promote the growth of normal epithelial cells and inhibits the growth of certain aggressive carcinoma cell lines. This encoded protein is associated with a psoriasis-like skin phenotype. [provided by RefSeq]

Other Designations

OTTHUMP00000160473|colorectum cell-derived growth factor|schwannoma-derived growth factor

Pathway

- [ErbB signaling pathway](#)

Disease

- [Genetic Predisposition to Disease](#)
- [Ovarian Neoplasms](#)