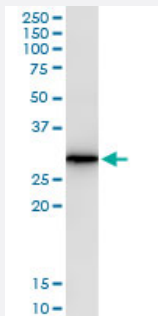


AREG monoclonal antibody (M06), clone 3E4

Catalog # H00000374-M06

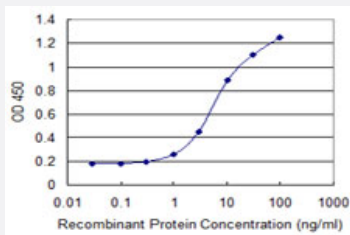
Size 100 ug

Applications



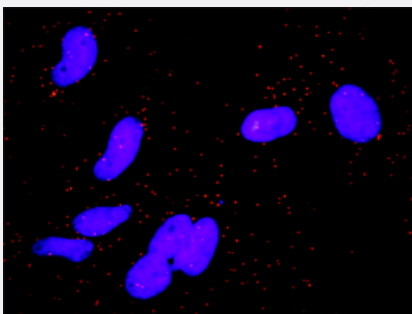
Western Blot (Tissue lysate)

AREG monoclonal antibody (M06), clone 3E4. Western Blot analysis of AREG expression in human pancreas.



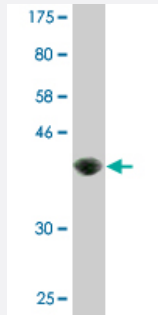
Sandwich ELISA (Recombinant protein)

Detection limit for recombinant GST tagged AREG is 0.3 ng/ml as a capture antibody.



In situ Proximity Ligation Assay (Cell)

Proximity Ligation Analysis of protein-protein interactions between CCND3 and AREG. HeLa cells were stained with anti-CCND3 rabbit purified polyclonal 1:1200 and anti-AREG mouse monoclonal antibody 1:50. Each red dot represents the detection of protein-protein interaction complex, and nuclei were counterstained with DAPI (blue).



Western Blot detection against Immunogen (37.73 KDa) .

Specification

Product Description	Mouse monoclonal antibody raised against a partial recombinant AREG.
Immunogen	AREG (AAH09799, 20 a.a. ~ 129 a.a) partial recombinant protein with GST tag. MW of the GST tag alone is 26 KDa.
Sequence	SGHYAAGLDLNDTYSKGREPFSGDHSADGFEVTSRSEMSSGSEISPVSEMPSSSEPSSGADYD YSEEDNEPQIPGYVDDSVRVEQVVKPPQNKTESENTSDKPKRKKK
Host	Mouse
Reactivity	Human
Isotype	IgG2b Kappa
Quality Control Testing	Antibody Reactive Against Recombinant Protein. Western Blot detection against Immunogen (37.73 KDa) .
Storage Buffer	In 1x PBS, pH 7.4
Storage Instruction	Store at -20°C or lower. Aliquot to avoid repeated freezing and thawing.

Applications

- Western Blot (Tissue lysate)

AREG monoclonal antibody (M06), clone 3E4. Western Blot analysis of AREG expression in human pancreas.

[Protocol Download](#)

- Western Blot (Recombinant protein)

[Protocol Download](#)

- Sandwich ELISA (Recombinant protein)

Detection limit for recombinant GST tagged AREG is 0.3 ng/ml as a capture antibody.

[Protocol Download](#)

- ELISA

- *In situ* Proximity Ligation Assay (Cell)

Proximity Ligation Analysis of protein-protein interactions between CCND3 and AREG. HeLa cells were stained with anti-CCND3 rabbit purified polyclonal 1:1200 and anti-AREG mouse monoclonal antibody 1:50. Each red dot represents the detection of protein-protein interaction complex, and nuclei were counterstained with DAPI (blue).

Gene Info — AREG

Entrez GeneID [374](#)

GeneBank Accession# [BC009799](#)

Protein Accession# [AAH09799](#)

Gene Name AREG

Gene Alias AR, CRDGF, MGC13647, SDGF

Gene Description amphiregulin

Omim ID [104640](#)

Gene Ontology [Hyperlink](#)

Gene Summary The protein encoded by this gene is a member of the epidermal growth factor family. It is an autocrine growth factor as well as a mitogen for astrocytes, Schwann cells, and fibroblasts. It is related to epidermal growth factor (EGF) and transforming growth factor alpha (TGF-alpha). This protein interacts with the EGF/TGF-alpha receptor to promote the growth of normal epithelial cells and inhibits the growth of certain aggressive carcinoma cell lines. This encoded protein is associated with a psoriasis-like skin phenotype. [provided by RefSeq]

Other Designations OTTHUMP00000160473|colorectum cell-derived growth factor|schwannoma-derived growth factor

Pathway

- [ErbB signaling pathway](#)

Disease

- [Genetic Predisposition to Disease](#)
- [Ovarian Neoplasms](#)