

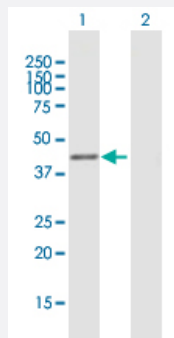
MaxPab®

# AREG purified MaxPab mouse polyclonal antibody (B02P)

Catalog # H00000374-B02P

Size 50 ug

## Applications



### Western Blot (Transfected lysate)

Western Blot analysis of AREG expression in transfected 293T cell line ([H00000374-T02](#)) by AREG MaxPab polyclonal antibody.

Lane 1: AREG transfected lysate(27.72 KDa).

Lane 2: Non-transfected lysate.

## Specification

Product Description	Mouse polyclonal antibody raised against a full-length human AREG protein.
Immunogen	AREG (NP_001648.1, 1 a.a. ~ 252 a.a) full-length human protein.
Sequence	MRAPLLPPAPVVLSELLGSGHYAAGLDLNDTYSKREPFSGDHSADGFVTSRSEMSSGSEISP VSEMPSSSEPSSGADYDYSEEYDNEPQIPGYVDDSVRVEQVVKPPQNKTESENTSDKPKRKKK GGKNGKNRRNRKKKNPCNAEFQNFCHGECKYIEHLEAVTCKCQQEYFGERCGEKSMKTHSMID SSLSKIALAAIAAFMSAVILTAVAVITVQLRRQYVRKYEGEAEERKKLRQENGVHAI
Host	Mouse
Reactivity	Human
Quality Control Testing	Antibody reactive against mammalian transfected lysate.
Storage Buffer	In 1x PBS, pH 7.4
Storage Instruction	Store at -20°C or lower. Aliquot to avoid repeated freezing and thawing.

## Applications

- Western Blot (Transfected lysate)

Western Blot analysis of AREG expression in transfected 293T cell line ([H00000374-T02](#)) by AREG MaxPab polyclonal antibody.

Lane 1: AREG transfected lysate(27.72 KDa).

Lane 2: Non-transfected lysate.

[Protocol Download](#)

## Gene Info — AREG

Entrez GeneID [374](#)

GeneBank Accession# [NM\\_001657.2](#)

Protein Accession# [NP\\_001648.1](#)

Gene Name AREG

Gene Alias AR, CRDGF, MGC13647, SDGF

Gene Description amphiregulin

Omim ID [104640](#)

Gene Ontology [Hyperlink](#)

**Gene Summary** The protein encoded by this gene is a member of the epidermal growth factor family. It is an autocrine growth factor as well as a mitogen for astrocytes, Schwann cells, and fibroblasts. It is related to epidermal growth factor (EGF) and transforming growth factor alpha (TGF-alpha). This protein interacts with the EGF/TGF-alpha receptor to promote the growth of normal epithelial cells and inhibits the growth of certain aggressive carcinoma cell lines. This encoded protein is associated with a psoriasis-like skin phenotype. [provided by RefSeq]

**Other Designations** OTTHUMP00000160473|colorectum cell-derived growth factor|schwannoma-derived growth factor

## Pathway

- [ErbB signaling pathway](#)

## Disease

- [Genetic Predisposition to Disease](#)
- [Ovarian Neoplasms](#)