

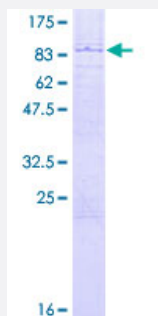
Full-Length

TRIM23 (Human) Recombinant Protein (P02)

Catalog # H00000373-P02

Size 25 ug, 10 ug

Applications



Specification

Product Description

Human TRIM23 full-length ORF (NP_001647.1, 1 a.a. - 574 a.a.) recombinant protein with GST-tag at N-terminal.

Sequence

MATLVVNKL GAGVDSGRQGSRGTA VVKVLECGVCEDV FSLQGDKVPRLLLCGHTVCHDCLTRL
PLHGRAIRCPFDRQVTDLGD SGVWGLKKNFALLELLERLQNGPIGQYGAAEESIGISGESIIRCDDED
EAHLASVYCTVCATHLCSECSQVTHSTKTLAKHRRVPLADKPHEKTMCSQH QVH AIEFVCLEEG
CQTSPLMCCVCKEYGKHQGHKHSVLEPEANQIRASILDMAHCIRTFTEEISDYSRKL VGIVQHIEGG
EQVEDGIGMAHTEHVPGTAENARSCIRAYFYDLHETLCRQEEMALSVVDAHVREKLMLRQQQE
DMTILLSEVSAACLHCEKTLQQDDCRVVLAKQEITRLLLET LQKQQQQFTEVADHIQLDASIPVTFTK
DNRVHIGPKMEIRVVTGLDGAGKTTILFKLKQDEFMQPIPTIGFNVETVEYKNLKTWDVGGKHKL
RPLWKHYLNTQAVVFVVDSSHRDRISEAHSELAKLLTEKELRDALLIFANKQDVAGALSVEEITE
LLSLHKLCCGRSWYIQGCDARSGMGLYEGLDWLSRQLVAAGVLDVA

Host

Wheat Germ (in vitro)

Theoretical MW (kDa)

90.5

Preparation Method

[in vitro wheat germ expression system](#)

Purification

Glutathione Sepharose 4 Fast Flow

Quality Control Testing

12.5% SDS-PAGE Stained with Coomassie Blue.

Storage Buffer

50 mM Tris-HCl, 10 mM reduced Glutathione, pH=8.0 in the elution buffer.

Storage Instruction

Store at -80°C. Aliquot to avoid repeated freezing and thawing.

Note

Best use within three months from the date of receipt of this protein.

Applications

- Enzyme-linked Immunoabsorbent Assay
- Western Blot (Recombinant protein)
- Antibody Production
- Protein Array

Gene Info — TRIM23

Entrez GeneID

[373](#)

GeneBank Accession#

[NM_001656.3](#)

Protein Accession#

[NP_001647.1](#)

Gene Name

TRIM23

Gene Alias

ARD1, ARFD1, RNF46

Gene Description

tripartite motif-containing 23

Omim ID

[601747](#)

Gene Ontology

[Hyperlink](#)

Gene Summary

The protein encoded by this gene is a member of the tripartite motif (TRIM) family. The TRIM motif includes three zinc-binding domains, a RING, a B-box type 1 and a B-box type 2, and a coiled-coil region. This protein is also a member of the ADP ribosylation factor family of guanine nucleotide-binding family of proteins. Its carboxy terminus contains an ADP-ribosylation factor domain and a guanine nucleotide binding site, while the amino terminus contains a GTPase activating protein domain which acts on the guanine nucleotide binding site. The protein localizes to lysosomes and the Golgi apparatus. It plays a role in the formation of intracellular transport vesicles, their movement from one compartment to another, and phospholipase D activation. Three alternatively spliced transcript variants for this gene have been described. [provided by RefSeq]

Other Designations

ADP-ribosylation factor domain protein 1|ADP-ribosylation factor domain protein 1, 64kDa|ARF domain protein 1|GTP-binding protein ARD-1|OTTHUMP00000123453|tripartite motif protein TRIM23