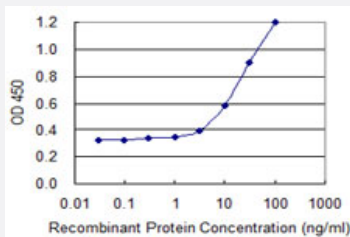


TRIM23 monoclonal antibody (M12), clone 2G4

Catalog # H00000373-M12 Size 100 ug

Applications



Sandwich ELISA (Recombinant protein)

Detection limit for recombinant GST tagged TRIM23 is 1 ng/ml as a capture antibody.

Specification

Product Description	Mouse monoclonal antibody raised against a full-length recombinant TRIM23.
Immunogen	TRIM23 (AAH22510, 1 a.a. ~ 574 a.a) full-length recombinant protein with GST tag. MW of the GST tag alone is 26 KDa.
Sequence	MATLVVNKLGAGVDSGRQGSRGTA VVKVLECGVCEDVFSLQGDKVPRLLLCGHTVCHDCLTRL PLHGRAIRCPFDRQVTDLGDSGVWGLKKNFALLELLERLQNGPIGQYGAAEESIGISGESIIRCDDED EAHLASVYCTVCATHLCSECSQVTHSTKTLAKHRRVPLADKPHEKTMCSQHQVHAIEFVCLEEG CQTSPLMCCVCKEYGKHQGHKHSVLEPEANQIRASILDMAHCIRTFTEEISDYSRKLVGIVQHIEGG EQVEDGIGMAHTEHVPGTAENARSCIRAYFYDLHETLCRQEEMALSVVDAHVREKLWLRQQQE DMTILLSEVSAACLHCEKTLQQDDCRVVLAKQEITRLLETQKQQQQFTEVADHIQLDASIPVTF TK DNRVHIGPKMEIRVVTGLDGAGKTTILFKLKQDEFMQPIPTIGFNVEVTEYKNLKFTWDVGGKHKL RPLWKHYLLNTQAVVFVVDSSHRDRISEAHSELAKLLTEKELRDALLIFANKQDVAGALSVEEITE LLSLHKLCGRSWYIQGCDARSGMGLYEGLDWLSRQLVAAGVLDVA
Host	Mouse
Reactivity	Human
Isotype	IgG1 Kappa
Quality Control Testing	Antibody Reactive Against Recombinant Protein.

Storage Buffer

In 1x PBS, pH 7.4

Storage Instruction

Store at -20°C or lower. Aliquot to avoid repeated freezing and thawing.

Applications

- Sandwich ELISA (Recombinant protein)

Detection limit for recombinant GST tagged TRIM23 is 1 ng/ml as a capture antibody.

[Protocol Download](#)

- ELISA

Gene Info — TRIM23

Entrez GeneID[373](#)**GeneBank Accession#**[BC022510](#)**Protein Accession#**[AAH22510](#)**Gene Name**

TRIM23

Gene Alias

ARD1, ARFD1, RNF46

Gene Description

tripartite motif-containing 23

Omim ID[601747](#)**Gene Ontology**[Hyperlink](#)**Gene Summary**

The protein encoded by this gene is a member of the tripartite motif (TRIM) family. The TRIM motif includes three zinc-binding domains, a RING, a B-box type 1 and a B-box type 2, and a coiled-coil region. This protein is also a member of the ADP ribosylation factor family of guanine nucleotide-binding family of proteins. Its carboxy terminus contains an ADP-ribosylation factor domain and a guanine nucleotide binding site, while the amino terminus contains a GTPase activating protein domain which acts on the guanine nucleotide binding site. The protein localizes to lysosomes and the Golgi apparatus. It plays a role in the formation of intracellular transport vesicles, their movement from one compartment to another, and phospholipase D activation. Three alternatively spliced transcript variants for this gene have been described. [provided by RefSeq]

Other Designations

ADP-ribosylation factor domain protein 1|ADP-ribosylation factor domain protein 1, 64kDa|ARF domain protein 1|GTP-binding protein ARD-1|OTTHUMP00000123453|tripartite motif protein TRIM23