

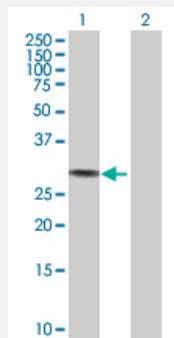
MaxPab®

KLK3 purified MaxPab rabbit polyclonal antibody (D01P)

Catalog # H00000354-D01P

Size 100 ug

Applications

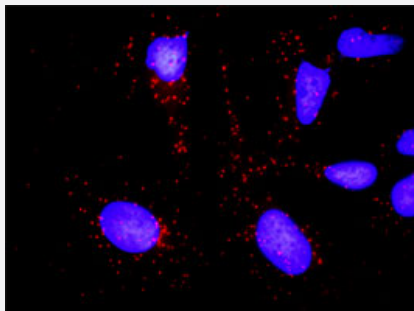


Western Blot (Transfected lysate)

Western Blot analysis of KLK3 expression in transfected 293T cell line ([H00000354-T01](#)) by KLK3 MaxPab polyclonal antibody.

Lane 1: KLK3 transfected lysate(28.70 kDa).

Lane 2: Non-transfected lysate.



In situ Proximity Ligation Assay (Cell)

Proximity Ligation Analysis of protein-protein interactions between KLK3 and A2M. HeLa cells were stained with anti-KLK3 rabbit purified polyclonal 1:1200 and anti-A2M mouse monoclonal antibody 1:50. Each red dot represents the detection of protein-protein interaction complex, and nuclei were counterstained with DAPI (blue).

Specification

Product Description

Rabbit polyclonal antibody raised against a full-length human KLK3 protein.

Immunogen

KLK3 (NP_001639.1, 1 a.a. ~ 261 a.a) full-length human protein.

Sequence

MWVPVFLTL SVTWIGAAPLILSRVGGWECEKHSQPWQVLVASRGRAVCGGVLVHPQWVL TAA
HCIRNKSVILLGRHSLFHPEDTGQVFQVSHSFPHPLYDMSLLKNRFLRPGDDSSHDLM LRLSEP
AELTDAVKVMDLPTQEPALGTTCTYASGWGSEIEPEEFLTPKKLQCVDLHVISNDVCAQVHPQKVTK
FMLCAGRWTGGKSTCSGDSGGPLVCNGVLQGITSWGSEPCALPERPSLYTKVVHYRKWIKDTV
ANP

Host

Rabbit

Reactivity	Human
Quality Control Testing	Antibody reactive against mammalian transfected lysate.
Storage Buffer	In 1x PBS, pH 7.4
Storage Instruction	Store at -20°C or lower. Aliquot to avoid repeated freezing and thawing.

Applications

- Western Blot (Transfected lysate)

Western Blot analysis of KLK3 expression in transfected 293T cell line ([H00000354-T01](#)) by KLK3 MaxPab polyclonal antibody.

Lane 1: KLK3 transfected lysate(28.70 KDa).

Lane 2: Non-transfected lysate.

[Protocol Download](#)

- In situ* Proximity Ligation Assay (Cell)

Proximity Ligation Analysis of protein-protein interactions between KLK3 and A2M. HeLa cells were stained with anti-KLK3 rabbit purified polyclonal 1:1200 and anti-A2M mouse monoclonal antibody 1:50. Each red dot represents the detection of protein-protein interaction complex, and nuclei were counterstained with DAPI (blue).

Gene Info — KLK3

Entrez GeneID	354
GeneBank Accession#	NM_001648
Protein Accession#	NP_001639.1
Gene Name	KLK3
Gene Alias	APS, KLK2A1, PSA, hK3
Gene Description	kallikrein-related peptidase 3
Omim ID	176820
Gene Ontology	Hyperlink

Gene Summary

Kallikreins are a subgroup of serine proteases having diverse physiological functions. Growing evidence suggests that many kallikreins are implicated in carcinogenesis and some have potential as novel cancer and other disease biomarkers. This gene is one of the fifteen kallikrein subfamily members located in a cluster on chromosome 19. Its protein product is a protease present in seminal plasma. It is thought to function normally in the liquefaction of seminal coagulum, presumably by hydrolysis of the high molecular mass seminal vesicle protein. Serum level of this protein, called PSA in the clinical setting, is useful in the diagnosis and monitoring of prostatic carcinoma. Alternate splicing of this gene generates several transcript variants encoding different isoforms. [provided by RefSeq]

Other Designations

P-30 antigen|gamma-seminoprotein|kallikrein 3, (prostate specific antigen)|prostate specific antigen|semenogelase|seminin

Pathway

- [Pathways in cancer](#)
- [Prostate cancer](#)

Disease

- [Breast cancer](#)
- [Breast Neoplasms](#)
- [Cardiovascular Diseases](#)
- [Diabetes Mellitus](#)
- [Disease Progression](#)
- [Edema](#)
- [Genetic Predisposition to Disease](#)
- [Lymphatic Metastasis](#)
- [Neoplasm Invasiveness](#)
- [Neoplasm Metastasis](#)
- [Neoplasm Recurrence](#)
- [Neoplasms](#)
- [Prostate cancer](#)

- [Prostatic Hyperplasia](#)
- [Prostatic Neoplasms](#)