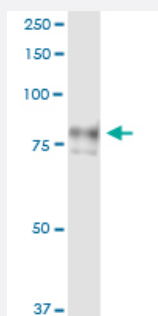


AOC2 (Human) IP-WB Antibody Pair

Catalog # H00000314-PW1

Size 1 Set

Applications



Immunoprecipitation of AOC2 transfected lysate using rabbit polyclonal anti-AOC2 and Protein A Magnetic Bead ([U0007](#)), and immunoblotted with mouse purified polyclonal anti-AOC2.

Specification

Product Description	This IP-WB antibody pair set comes with one antibody for immunoprecipitation and another to detect the precipitated protein in western blot.
Reactivity	Human
Quality Control Testing	Immunoprecipitation-Western Blot (IP-WB) Immunoprecipitation of AOC2 transfected lysate using rabbit polyclonal anti-AOC2 and Protein A Magnetic Bead (U0007), and immunoblotted with mouse purified polyclonal anti-AOC2.
Supplied Product	Antibody pair set content: 1. Antibody pair for IP: rabbit polyclonal anti-AOC2 (300 ul) 2. Antibody pair for WB: mouse purified polyclonal anti-AOC2 (50 ug)
Storage Instruction	Store reagents of the antibody pair set at -20°C or lower. Please aliquot to avoid repeated freeze thaw cycle. Reagents should be returned to -20°C storage immediately after use.

Applications

- Immunoprecipitation-Western Blot

[Protocol Download](#)

Gene Info — AOC2

Entrez GeneID [314](#)

Gene Name AOC2

Gene Alias DAO2, RAO

Gene Description amine oxidase, copper containing 2 (retina-specific)

Omim ID [602268](#)

Gene Ontology [Hyperlink](#)

Gene Summary Copper amine oxidases catalyze the oxidative conversion of amines to aldehydes and ammonia in the presence of copper and quinone cofactor. This gene shows high sequence similarity to copper amine oxidases from various species ranging from bacteria to mammals. The protein contains several conserved motifs including the active site of amine oxidases and the histidine residues that likely bind copper. It may be a critical modulator of signal transmission in retina, possibly by degrading the biogenic amines dopamine, histamine, and putrescine. This gene may be a candidate gene for hereditary ocular diseases. Alternate splicing results in multiple transcript variants. [provided by RefSeq]

Other Designations amine oxidase, copper containing 2

Pathway

- [beta-Alanine metabolism](#)
- [Biosynthesis of alkaloids derived from ornithine](#)
- [Glycine](#)
- [Isoquinoline alkaloid biosynthesis](#)
- [Metabolic pathways](#)
- [Phenylalanine metabolism](#)
- [Tropane](#)
- [Tyrosine metabolism](#)