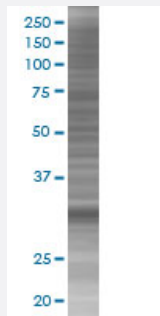


ANXA4 293T Cell Transient Overexpression Lysate(Denatured)

Catalog # H00000307-T01

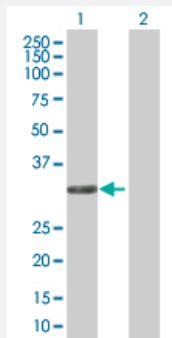
Size 100 uL

Applications



SDS-PAGE Gel

ANXA4 transfected lysate.



Western Blot

Lane 1: ANXA4 transfected lysate (36.1 KDa)

Lane 2: Non-transfected lysate.

Specification

Transfected Cell Line	293T
Plasmid	pCMV-ANXA4 full-length
Host	Human
Theoretical MW (kDa)	36.1
Interspecies Antigen Sequence	Mouse (92); Rat (93)

Quality Control Testing

Transient overexpression cell lysate was tested with Anti-ANXA4 antibody ([H00000307-B01](#)) by Western Blots.
SDS-PAGE Gel
ANXA4 transfected lysate.
Western Blot
Lane 1: ANXA4 transfected lysate (36.1 KDa)
Lane 2: Non-transfected lysate.

Storage Buffer

1X Sample Buffer (50 mM Tris-HCl, 2% SDS, 10% glycerol, 300 mM 2-mercaptoethanol, 0.01% Bromophenol blue)

Storage Instruction

Store at -80°C. Aliquot to avoid repeated freezing and thawing.

Applications

- Western Blot

Gene Info — ANXA4

Entrez GeneID

[307](#)

GeneBank Accession#

[NM_001153.2](#)

Protein Accession#

-

Gene Name

ANXA4

Gene Alias

ANX4, DKFZp686H02120, MGC75105, PIG28, ZAP36

Gene Description

annexin A4

Omim ID

[106491](#)

Gene Ontology

[Hyperlink](#)

Gene Summary

Annexin IV (ANX4) belongs to the annexin family of calcium-dependent phospholipid binding proteins. Although their functions are still not clearly defined, several members of the annexin family have been implicated in membrane-related events along exocytotic and endocytotic pathways. ANX4 has 45 to 59% identity with other members of its family and shares a similar size and exon-intron organization. Isolated from human placenta, ANX4 encodes a protein that has possible interactions with ATP, and has in vitro anticoagulant activity and also inhibits phospholipase A2 activity. ANX4 is almost exclusively expressed in epithelial cells. [provided by RefSeq]

Other Designations

annexin IV|annexin IV (placental anticoagulant protein II)|placental anticoagulant protein II|proliferation-inducing gene 28|proliferation-inducing protein 28

Disease

- [Cardiovascular Diseases](#)
- [Diabetes Mellitus](#)
- [Edema](#)
- [Tobacco Use Disorder](#)