

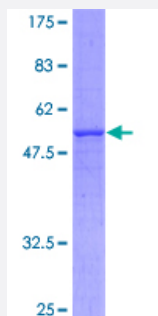
Full-Length

SLC25A6 (Human) Recombinant Protein (P01)

Catalog # H00000293-P01

Size 25 ug, 10 ug

Applications



Specification

Product Description

Human SLC25A6 full-length ORF (AAH14775, 1 a.a. - 298 a.a.) recombinant protein with GST-tag at N-terminal.

Sequence

MTEQAISFAKDFLAGGIAAAISKTA VAPIERVKLLLQVQHASKQIAADKQYKGMD CVRIPKEQGVLSFWRG NLANVIRYFPTQALNFAFKDKYKQIFLGGVDKHTQFWRYFAGNLASGGAAGATSLCFVYPLDFARTRLAADV GKS GTEREF RGLGDCLVKITKSDGIRGLYQGFSVSVQGGIIYRAAYFGVYDTAKGMLPDPKNTHMVSWMIAQTVTAVAGVVSYPFDTVRRRMMM QFGRKGADIMYGTGTVDCWRKIFRDEGGKAFFKGAWSNVL RGMGGA FVLVLYDELKKVI

Host

Wheat Germ (in vitro)

Theoretical MW (kDa)

58.52

Preparation Method

[in vitro wheat germ expression system](#)

Purification

Glutathione Sepharose 4 Fast Flow

Quality Control Testing

12.5% SDS-PAGE Stained with Coomassie Blue.

Storage Buffer

50 mM Tris-HCl, 10 mM reduced Glutathione, pH=8.0 in the elution buffer.

Storage Instruction

Store at -80°C. Aliquot to avoid repeated freezing and thawing.

Note

Best use within three months from the date of receipt of this protein.

Applications

- Enzyme-linked Immunoabsorbent Assay
- Western Blot (Recombinant protein)
- Antibody Production
- Protein Array

Gene Info — SLC25A6

Entrez GeneID	293
GeneBank Accession#	BC014775
Protein Accession#	AAH14775
Gene Name	SLC25A6
Gene Alias	AAC3, ANT3, ANT3Y, MGC17525
Gene Description	solute carrier family 25 (mitochondrial carrier; adenine nucleotide translocator), member 6
Omim ID	300151 403000
Gene Ontology	Hyperlink
Gene Summary	This gene is a member of the mitochondrial carrier subfamily of solute carrier protein genes. The product of this gene functions as a gated pore that translocates ADP from the mitochondrial matrix into the cytoplasm. The protein is implicated in the function of the permeability transition pore complex (PTPC), which regulates the release of mitochondrial products that induce apoptosis. The human genome contains several non-transcribed pseudogenes of this gene. [provided by RefSeq]
Other Designations	ADP,ATP carrier protein, liver ADP/ATP translocase 3 ADP/ATP translocator of liver OTTHUMP0000022826 adenine nucleotide translocator 3 solute carrier family 25, member A6

Pathway

- [Calcium signaling pathway](#)