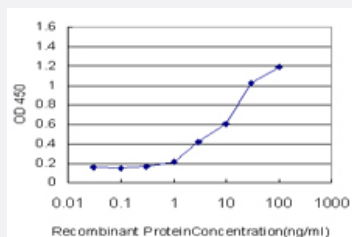


# SLC25A6 monoclonal antibody (M01), clone 2A9

Catalog # H00000293-M01

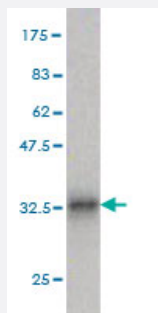
Size 100 ug

## Applications



### Sandwich ELISA (Recombinant protein)

Detection limit for recombinant GST tagged SLC25A6 is approximately 1ng/ml as a capture antibody.



Western Blot detection against Immunogen (33.99 KDa) .

## Specification

Product Description	Mouse monoclonal antibody raised against a partial recombinant SLC25A6.
Immunogen	SLC25A6 (NP_001627, 135 a.a. ~ 209 a.a) partial recombinant protein with GST tag. MW of the GST tag alone is 26 KDa.
Sequence	DFARTRLAADVGKSGTEREFRGLGDCLVKITKSDGIRGLYQGFSVSVQGIIYRAAYFGVYDTAKGMLPDPKNTH
Host	Mouse
Reactivity	Human
Isotype	IgG3 Kappa

**Quality Control Testing**

Antibody Reactive Against Recombinant Protein.  
Western Blot detection against Immunogen (33.99 KDa) .

**Storage Buffer**

In 1x PBS, pH 7.4

**Storage Instruction**

Store at -20°C or lower. Aliquot to avoid repeated freezing and thawing.

## Applications

- Western Blot (Recombinant protein)

[Protocol Download](#)

- Sandwich ELISA (Recombinant protein)

Detection limit for recombinant GST tagged SLC25A6 is approximately 1ng/ml as a capture antibody.

[Protocol Download](#)

- ELISA

## Gene Info — SLC25A6

**Entrez GeneID**

[293](#)

**GeneBank Accession#**

[NM\\_001636](#)

**Protein Accession#**

[NP\\_001627](#)

**Gene Name**

SLC25A6

**Gene Alias**

AAC3, ANT3, ANT3Y, MGC17525

**Gene Description**

solute carrier family 25 (mitochondrial carrier; adenine nucleotide translocator), member 6

**Omim ID**

[300151 403000](#)

**Gene Ontology**

[Hyperlink](#)

**Gene Summary**

This gene is a member of the mitochondrial carrier subfamily of solute carrier protein genes. The product of this gene functions as a gated pore that translocates ADP from the mitochondrial matrix into the cytoplasm. The protein is implicated in the function of the permeability transition pore complex (PTPC), which regulates the release of mitochondrial products that induce apoptosis. The human genome contains several non-transcribed pseudogenes of this gene. [provided by RefSeq

**Other Designations**

ADP,ATP carrier protein, liver|ADP/ATP translocase 3|ADP/ATP translocator of liver|OTTHUMP0000022826|adenine nucleotide translocator 3|solute carrier family 25, member A6

**Pathway**

- [Calcium signaling pathway](#)