

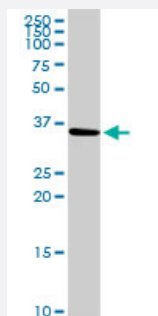
MaxPab®

SLC25A6 purified MaxPab rabbit polyclonal antibody (D01P)

Catalog # H00000293-D01P

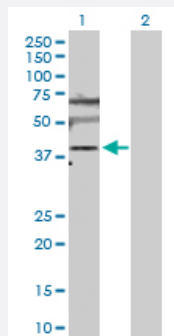
Size 100 ug

Applications



Western Blot (Tissue lysate)

SLC25A6 MaxPab rabbit polyclonal antibody. Western Blot analysis of SLC25A6 expression in mouse liver.



Western Blot (Transfected lysate)

Western Blot analysis of SLC25A6 expression in transfected 293T cell line ([H00000293-T02](#)) by SLC25A6 MaxPab polyclonal antibody.

Lane 1: SLC25A6 transfected lysate(32.90 KDa).

Lane 2: Non-transfected lysate.

Specification

Product Description

Rabbit polyclonal antibody raised against a full-length human SLC25A6 protein.

Immunogen

SLC25A6 (AAH14775.1, 1 a.a. ~ 298 a.a) full-length human protein.

Sequence

MTEQAISFAKDFLAGGIAAAISKTA VAPIERVKLLLQVQHASKQIAADKQYKGMD CVRIPKEQGVLSFWRG NLANVIRYFPTQALNFAFKDKYKQIFLGGVDKHTQFWRYFAGNLASGGAAGATSLCFVYPLDFARTRLAADV GKS GTEREF RGLGDCLVKITKSDGIRGLYQGFSVSVQQGIIYRAAYFGVYDTAKGMLPDPKNTHMVSWMIAQTVTAVAGVVSYPFDTVRRRMMM QFGRKGADIMYTGTVDCWRKIFRDEGGKAFFKGAWSNVLRGMGGAFLVLYDELKKVI

Host

Rabbit

Reactivity	Human, Mouse
Quality Control Testing	Antibody reactive against mammalian transfected lysate.
Storage Buffer	In 1x PBS, pH 7.4
Storage Instruction	Store at -20°C or lower. Aliquot to avoid repeated freezing and thawing.

Applications

- Western Blot (Tissue lysate)

SLC25A6 MaxPab rabbit polyclonal antibody. Western Blot analysis of SLC25A6 expression in mouse liver.

[Protocol Download](#)

- Western Blot (Transfected lysate)

Western Blot analysis of SLC25A6 expression in transfected 293T cell line ([H00000293-T02](#)) by SLC25A6 MaxPab polyclonal antibody.

Lane 1: SLC25A6 transfected lysate(32.90 KDa).

Lane 2: Non-transfected lysate.

[Protocol Download](#)

Gene Info — SLC25A6

Entrez GeneID	293
GeneBank Accession#	BC014775.1
Protein Accession#	AAH14775.1
Gene Name	SLC25A6
Gene Alias	AAC3, ANT3, ANT3Y, MGC17525
Gene Description	solute carrier family 25 (mitochondrial carrier; adenine nucleotide translocator), member 6
Omim ID	300151 403000
Gene Ontology	Hyperlink

Gene Summary

This gene is a member of the mitochondrial carrier subfamily of solute carrier protein genes. The product of this gene functions as a gated pore that translocates ADP from the mitochondrial matrix into the cytoplasm. The protein is implicated in the function of the permeability transition pore complex (PTPC), which regulates the release of mitochondrial products that induce apoptosis. The human genome contains several non-transcribed pseudogenes of this gene. [provided by RefSeq]

Other Designations

ADP,ATP carrier protein, liver|ADP/ATP translocase 3|ADP/ATP translocator of liver|OTTHUMP0000022826|adenine nucleotide translocator 3|solute carrier family 25, member A6

Pathway

- [Calcium signaling pathway](#)