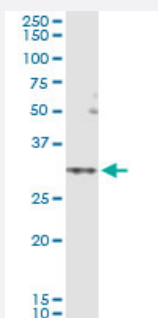


SLC25A5 (Human) IP-WB Antibody Pair

Catalog # H00000292-PW1

Size 1 Set

Applications



Immunoprecipitation of SLC25A5 transfected lysate using rabbit polyclonal anti-SLC25A5 and Protein A Magnetic Bead ([U0007](#)), and immunoblotted with mouse polyclonal anti-SLC25A5.

Specification

Product Description

This IP-WB antibody pair set comes with one antibody for immunoprecipitation and another to detect the precipitated protein in western blot.

Reactivity

Human

Quality Control Testing

Immunoprecipitation-Western Blot (IP-WB)

Immunoprecipitation of SLC25A5 transfected lysate using rabbit polyclonal anti-SLC25A5 and Protein A Magnetic Bead ([U0007](#)), and immunoblotted with mouse polyclonal anti-SLC25A5.

Supplied Product

Antibody pair set content:

1. Antibody pair for IP: rabbit polyclonal anti-SLC25A5 (300 ul)
2. Antibody pair for WB: mouse polyclonal anti-SLC25A5 (50 ul)

Storage Instruction

Store reagents of the antibody pair set at -20°C or lower. Please aliquot to avoid repeated freeze thaw cycle. Reagents should be returned to -20°C storage immediately after use.

Applications

- Immunoprecipitation-Western Blot

[Protocol Download](#)

Gene Info — SLC25A5

Entrez GeneID	292
Gene Name	SLC25A5
Gene Alias	2F1, AAC2, ANT2, T2, T3
Gene Description	solute carrier family 25 (mitochondrial carrier; adenine nucleotide translocator), member 5
Omim ID	300150
Gene Ontology	Hyperlink
Gene Summary	<p>This gene is a member of the mitochondrial carrier subfamily of solute carrier protein genes. The product of this gene functions as a gated pore that translocates ADP from the mitochondrial matrix into the cytoplasm. The protein forms a homodimer embedded in the inner mitochondria membrane. Suppressed expression of this gene has been shown to induce apoptosis and inhibit tumor growth. The human genome contains several non-transcribed pseudogenes of this gene</p>
Other Designations	OTTHUMP00000024324 adenine nucleotide translocator 2 (fibroblast) solute carrier family 25, member 5

Pathway

- [Calcium signaling pathway](#)