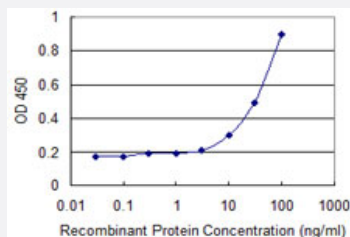


SLC25A5 monoclonal antibody (M01), clone 1D7

Catalog # H00000292-M01

Size 100 ug

Applications



Sandwich ELISA (Recombinant protein)

Detection limit for recombinant GST tagged SLC25A5 is 3 ng/ml as a capture antibody.

Specification

Product Description	Mouse monoclonal antibody raised against a full-length recombinant SLC25A5.
Immunogen	SLC25A5 (AAH56160, 1 a.a. ~ 298 a.a) full-length recombinant protein with GST tag. MW of the GST tag alone is 26 KDa.
Sequence	MTDAAVSFAKDFLAGGVAAAISKTA VAPIERVKLLLQVQHASKQITADKQYKGII DCVVRIPEQGV LSFWRGNLANVIRYFPTQALNFAFKDKYKQIFLGGVDKRTQFWRYFAGNLASGGAAGATSLCFVY PLDFARTRLAADVKGAGAEREFRGLGDCLVKYKSDGKGLYQGFNVSVQGIIYRAAYFGMDTAKG MLPDPKNTHIVISWMAQTVTAVAGLTSYPFDTVRRRMMMQSGRKGTDIMYGTGLDCWRKIARDEG GKAFFKGAWSNVLRGMGGAFVLVLYDEIKKYT
Host	Mouse
Reactivity	Human
Interspecies Antigen Sequence	Mouse (99); Rat (99)
Isotype	IgG2a Kappa
Quality Control Testing	Antibody Reactive Against Recombinant Protein.
Storage Buffer	In 1x PBS, pH 7.4

Storage Instruction

Store at -20°C or lower. Aliquot to avoid repeated freezing and thawing.

Applications

- Sandwich ELISA (Recombinant protein)

Detection limit for recombinant GST tagged SLC25A5 is 3 ng/ml as a capture antibody.

[Protocol Download](#)

- ELISA

Gene Info — SLC25A5

Entrez GeneID [292](#)**GeneBank Accession#** [BC056160](#)**Protein Accession#** [AAH56160](#)**Gene Name** SLC25A5**Gene Alias** 2F1, AAC2, ANT2, T2, T3**Gene Description** solute carrier family 25 (mitochondrial carrier; adenine nucleotide translocator), member 5**Omim ID** [300150](#)**Gene Ontology** [Hyperlink](#)

Gene Summary This gene is a member of the mitochondrial carrier subfamily of solute carrier protein genes. The product of this gene functions as a gated pore that translocates ADP from the mitochondrial matrix into the cytoplasm. The protein forms a homodimer embedded in the inner mitochondrial membrane. Suppressed expression of this gene has been shown to induce apoptosis and inhibit tumor growth. The human genome contains several non-transcribed pseudogenes of this gene

Other Designations OTTHUMP00000024324|adenine nucleotide translocator 2 (fibroblast)|solute carrier family 25, member 5

Pathway

- [Calcium signaling pathway](#)