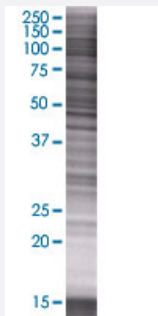


# AMY2B 293T Cell Transient Overexpression Lysate(Denatured)

Catalog # H00000280-T01

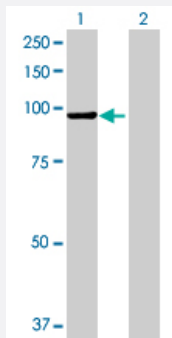
Size 100 uL

## Applications



### SDS-PAGE Gel

AMY2B transfected lysate.



### Western Blot

Lane 1: AMY2B transfected lysate ( 56.32 KDa)

Lane 2: Non-transfected lysate.

## Specification

Transfected Cell Line	293T
Plasmid	pCMV-AMY2B full-length
Host	Human
Theoretical MW (kDa)	56.32
Interspecies Antigen Sequence	Mouse (85)

## Quality Control Testing

Transient overexpression cell lysate was tested with Anti-AMY2B antibody ([H00000280-B01](#)) by Western Blots.  
SDS-PAGE Gel  
AMY2B transfected lysate.  
Western Blot  
Lane 1: AMY2B transfected lysate ( 56.32 KDa)  
Lane 2: Non-transfected lysate.

## Storage Buffer

1X Sample Buffer (50 mM Tris-HCl, 2% SDS, 10% glycerol, 300 mM 2-mercaptoethanol, 0.01% Bromophenol blue)

## Storage Instruction

Store at -80°C. Aliquot to avoid repeated freezing and thawing.

## Applications

- Western Blot

## Gene Info — AMY2B

## Entrez GeneID

[280](#)

## GeneBank Accession#

[NM\\_020978.3](#)

## Protein Accession#

[NP\\_066188.1](#)

## Gene Name

AMY2B

## Gene Alias

AMY2

## Gene Description

amylase, alpha 2B (pancreatic)

## Omim ID

[104660](#)

## Gene Ontology

[Hyperlink](#)

## Gene Summary

Amylases are secreted proteins that hydrolyze 1,4-alpha-glucoside bonds in oligosaccharides and polysaccharides, and thus catalyze the first step in digestion of dietary starch and glycogen. The human genome has a cluster of several amylase genes that are expressed at high levels in either salivary gland or pancreas. This gene encodes an amylase isoenzyme produced by the pancreas. [provided by RefSeq]

## Other Designations

1,4-alpha-D-glucan glucanohydrolase|OTTHUMP00000012696|alpha-amylase carcinoid|amylase, pancreatic, alpha-2B|glycogenase

## Pathway

- [Metabolic pathways](#)
- [Starch and sucrose metabolism](#)