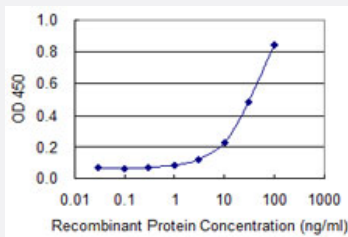


AMY2B monoclonal antibody (M01), clone 2B12

Catalog # H00000280-M01

Size 100 ug

Applications



Sandwich ELISA (Recombinant protein)

Detection limit for recombinant GST tagged AMY2B is 1 ng/ml as a capture antibody.

Specification

Product Description	Mouse monoclonal antibody raised against a partial recombinant AMY2B.
Immunogen	AMY2B (NP_066188, 19 a.a. ~ 117 a.a) partial recombinant protein with GST tag. MW of the GST tag alone is 26 KDa.
Sequence	PNTQQGRTSIVHLFEWRWVDIALECERYLAPKGFGGVQVSPNENVAIHNPFPPWWERYQPVS YKLCTRSGNEDEFNMVTRCANNVGVRIVDAVINHM
Host	Mouse
Reactivity	Human
Interspecies Antigen Sequence	Mouse (89)
Isotype	IgG2a Kappa
Quality Control Testing	Antibody Reactive Against Recombinant Protein.
Storage Buffer	In 1x PBS, pH 7.4
Storage Instruction	Store at -20°C or lower. Aliquot to avoid repeated freezing and thawing.

Applications

- Sandwich ELISA (Recombinant protein)

Detection limit for recombinant GST tagged AMY2B is 1 ng/ml as a capture antibody.

[Protocol Download](#)

- ELISA

Gene Info — AMY2B

Entrez GeneID	280
---------------	---------------------

GeneBank Accession#	NM_020978
---------------------	---------------------------

Protein Accession#	NP_066188
--------------------	---------------------------

Gene Name	AMY2B
-----------	-------

Gene Alias	AMY2
------------	------

Gene Description	amylase, alpha 2B (pancreatic)
------------------	--------------------------------

Omim ID	104660
---------	------------------------

Gene Ontology	Hyperlink
---------------	---------------------------

Gene Summary	Amylases are secreted proteins that hydrolyze 1,4-alpha-glucoside bonds in oligosaccharides and polysaccharides, and thus catalyze the first step in digestion of dietary starch and glycogen. The human genome has a cluster of several amylase genes that are expressed at high levels in either salivary gland or pancreas. This gene encodes an amylase isoenzyme produced by the pancreas. [provided by RefSeq]
--------------	--

Other Designations	1,4-alpha-D-glucan glucanohydrolase OTTHUMP00000012696 alpha-amylase carcinoid amylase , pancreatic, alpha-2B glycogenase
--------------------	---

Pathway

- [Metabolic pathways](#)
- [Starch and sucrose metabolism](#)