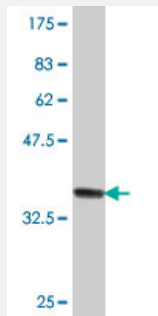


# AMY2B polyclonal antibody (A01)

Catalog # H00000280-A01

Size 50 uL

## Applications



Western Blot detection against Immunogen (37 KDa) .

## Specification

<b>Product Description</b>	Mouse polyclonal antibody raised against a partial recombinant AMY2B.
<b>Immunogen</b>	AMY2B (NP_066188, 19 a.a. ~ 117 a.a) partial recombinant protein with GST tag.
<b>Sequence</b>	PNTQQGRTSMVHLFEWRWVDIALECERYLAPKGFGGVQVSPNENVAIHNPFRPWWERYQPVS YKLCTRSGNEDEFNMVTRCNNVGVRIVDAVINHM
<b>Host</b>	Mouse
<b>Reactivity</b>	Human
<b>Interspecies Antigen Sequence</b>	Mouse (89)
<b>Quality Control Testing</b>	Antibody Reactive Against Recombinant Protein. Western Blot detection against Immunogen (37 KDa) .
<b>Storage Buffer</b>	50 % glycerol
<b>Storage Instruction</b>	Store at -20°C or lower. Aliquot to avoid repeated freezing and thawing.

## Applications

- Western Blot (Recombinant protein)

[Protocol Download](#)

- ELISA

## Gene Info — AMY2B

Entrez GeneID [280](#)

GeneBank Accession# [NM\\_020978](#)

Protein Accession# [NP\\_066188](#)

Gene Name AMY2B

Gene Alias AMY2

Gene Description amylase, alpha 2B (pancreatic)

Omim ID [104660](#)

Gene Ontology [Hyperlink](#)

**Gene Summary** Amylases are secreted proteins that hydrolyze 1,4-alpha-glucoside bonds in oligosaccharides and polysaccharides, and thus catalyze the first step in digestion of dietary starch and glycogen. The human genome has a cluster of several amylase genes that are expressed at high levels in either salivary gland or pancreas. This gene encodes an amylase isoenzyme produced by the pancreas. [provided by RefSeq]

**Other Designations** 1,4-alpha-D-glucan glucanohydrolase|OTTHUMP00000012696|alpha-amylase carcinoid|amylase , pancreatic, alpha-2B|glycogenase

## Pathway

- [Metabolic pathways](#)
- [Starch and sucrose metabolism](#)