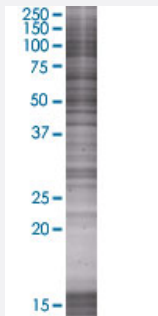


# AMY2A 293T Cell Transient Overexpression Lysate(Denatured)

Catalog # H00000279-T01

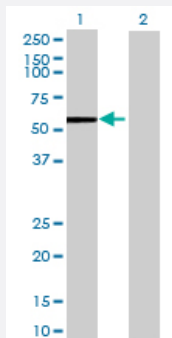
Size 100 uL

## Applications



### SDS-PAGE Gel

AMY2A transfected lysate.



### Western Blot

Lane 1: AMY2A transfected lysate ( 56.32 KDa)

Lane 2: Non-transfected lysate.

## Specification

|                               |                        |
|-------------------------------|------------------------|
| Transfected Cell Line         | 293T                   |
| Plasmid                       | pCMV-AMY2A full-length |
| Host                          | Human                  |
| Theoretical MW (kDa)          | 56.32                  |
| Interspecies Antigen Sequence | Mouse (85); Rat (85)   |

**Quality Control Testing**

Transient overexpression cell lysate was tested with Anti-AMY2A antibody ([H00000279-B01](#)) by Western Blots.  
SDS-PAGE Gel  
AMY2A transfected lysate.  
Western Blot  
Lane 1: AMY2A transfected lysate ( 56.32 KDa)  
Lane 2: Non-transfected lysate.

**Storage Buffer**

1X Sample Buffer (50 mM Tris-HCl, 2% SDS, 10% glycerol, 300 mM 2-mercaptoethanol, 0.01% Bromophenol blue)

**Storage Instruction**

Store at -80°C. Aliquot to avoid repeated freezing and thawing.

## Applications

- Western Blot

## Gene Info — AMY2A

**Entrez GeneID**[279](#)**GeneBank Accession#**[NM\\_000699.2](#)**Protein Accession#**[NP\\_000690.1](#)**Gene Name**

AMY2A

**Gene Alias**

AMY2, AMY2B, PA

**Gene Description**

amylase, alpha 2A (pancreatic)

**Omim ID**[104650](#)**Gene Ontology**[Hyperlink](#)**Gene Summary**

Amylases are secreted proteins that hydrolyze 1,4-alpha-glucoside bonds in oligosaccharides and polysaccharides, and thus catalyze the first step in digestion of dietary starch and glycogen. The human genome has a cluster of several amylase genes that are expressed at high levels in either salivary gland or pancreas. This gene encodes an amylase isoenzyme produced by the pancreas. [provided by RefSeq]

**Other Designations**

1,4-alpha-D-glucan glucanohydrolase|OTTHUMP00000012694|alpha-amylase|amylase, pancreatic, alpha-2A|found in the pancreas|glycogenase|pancreatic amylase 2A|pancreatic amylase alpha 2A

## Pathway

- [Metabolic pathways](#)
- [Starch and sucrose metabolism](#)