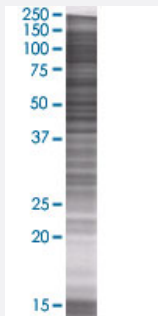


# AMY1B 293T Cell Transient Overexpression Lysate(Denatured)

Catalog # H00000277-T01

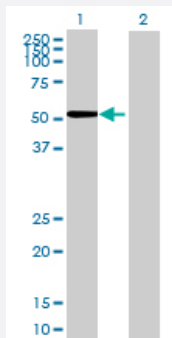
Size 100 uL

## Applications



### SDS-PAGE Gel

AMY1B transfected lysate.



### Western Blot

Lane 1: AMY1B transfected lysate ( 56.32 KDa)

Lane 2: Non-transfected lysate.

## Specification

**Transfected Cell Line** 293T

**Plasmid** pCMV-AMY1B full-length

**Host** Human

**Theoretical MW (kDa)** 56.32

**Quality Control Testing** Transient overexpression cell lysate was tested with Anti-AMY1B antibody ([H00000277-B01](#)) by Western Blots.  
 SDS-PAGE Gel  
 AMY1B transfected lysate.  
 Western Blot  
 Lane 1: AMY1B transfected lysate ( 56.32 KDa)  
 Lane 2: Non-transfected lysate.

**Storage Buffer**

1X Sample Buffer (50 mM Tris-HCl, 2% SDS, 10% glycerol, 300 mM 2-mercaptoethanol, 0.01% Bromophenol blue)

**Storage Instruction**

Store at -80°C. Aliquot to avoid repeated freezing and thawing.

## Applications

- Western Blot

## Gene Info — AMY1B

**Entrez GeneID**[277](#)**GeneBank Accession#**[NM\\_001008218.1](#)**Protein Accession#**[NP\\_001008219.1](#)**Gene Name**

AMY1B

**Gene Alias**

AMY1

**Gene Description**

amylase, alpha 1B (salivary)

**Omim ID**[104701](#)**Gene Ontology**[Hyperlink](#)**Gene Summary**

Amylases are secreted proteins that hydrolyze 1,4-alpha-glucoside bonds in oligosaccharides and polysaccharides, and thus catalyze the first step in digestion of dietary starch and glycogen. The human genome has a cluster of several amylase genes that are expressed at high levels in either salivary gland or pancreas. This gene encodes an amylase isoenzyme produced by the salivary gland. [provided by RefSeq]

**Other Designations**

1,4-alpha-D-glucan glucanohydrolase|OTTHUMP00000012691|amylase, salivary, alpha-1B|glycogenase|salivary amylase alpha 1B

## Pathway

- [Metabolic pathways](#)
- [Starch and sucrose metabolism](#)