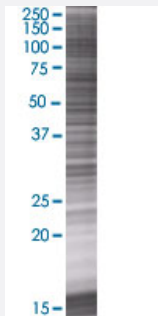


# AMPH 293T Cell Transient Overexpression Lysate(Denatured)

Catalog # H00000273-T01

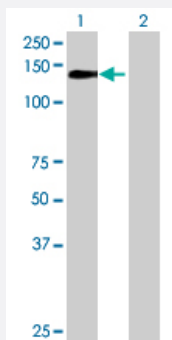
Size 100 uL

## Applications



### SDS-PAGE Gel

AMPH transfected lysate.



### Western Blot

Lane 1: AMPH transfected lysate ( 76.56 KDa)

Lane 2: Non-transfected lysate.

## Specification

Transfected Cell Line	293T
Plasmid	pCMV-AMPH full-length
Host	Human
Theoretical MW (kDa)	76.56
Interspecies Antigen Sequence	Mouse (84)

**Quality Control Testing**

Transient overexpression cell lysate was tested with Anti-AMPH antibody ([H00000273-B01](#)) by Western Blots.  
SDS-PAGE Gel  
AMPH transfected lysate.  
Western Blot  
Lane 1: AMPH transfected lysate ( 76.56 KDa)  
Lane 2: Non-transfected lysate.

**Storage Buffer**

1X Sample Buffer (50 mM Tris-HCl, 2% SDS, 10% glycerol, 300 mM 2-mercaptoethanol, 0.01% Bromophenol blue)

**Storage Instruction**

Store at -80°C. Aliquot to avoid repeated freezing and thawing.

## Applications

- Western Blot

## Gene Info — AMPH

**Entrez GeneID**[273](#)**GeneBank Accession#**[BC034376.1](#)**Protein Accession#**[AAH34376.1](#)**Gene Name**

AMPH

**Gene Alias**

AMPH1

**Gene Description**

amphiphysin

**Omim ID**[600418](#)**Gene Ontology**[Hyperlink](#)**Gene Summary**

This gene encodes a protein associated with the cytoplasmic surface of synaptic vesicles. A subset of patients with stiff-man syndrome who were also affected by breast cancer are positive for autoantibodies against this protein. Alternate splicing of this gene results in two transcript variants encoding different isoforms. Additional splice variants have been described, but their full length sequences have not been determined. [provided by RefSeq]

**Other Designations**

Stiff-Man syndrome with breast cancer 128kDa autoantigen|amphiphysin (Stiff-Mann syndrome with breast cancer 128kD autoantigen)

## Pathway

- [Fc gamma R-mediated phagocytosis](#)

## Disease

- [Tobacco Use Disorder](#)