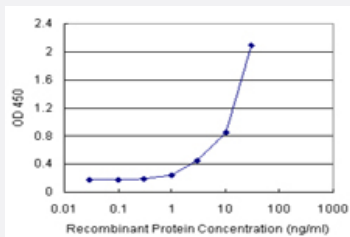


AMBP (Human) Matched Antibody Pair

Catalog # H00000259-AP11

Size 1 Set

Applications



Sandwich ELISA detection sensitivity ranging from 1 ng/ml to 100 ng/ml.

Specification

Product Description	This antibody pair set comes with a matched antibody pair to detect and quantify the protein level of human AMBP.
Reactivity	Human
Quality Control Testing	Standard curve using recombinant protein (H00000259-P01) as an analyte. Sandwich ELISA detection sensitivity ranging from 1 ng/ml to 100 ng/ml.
Supplied Product	Antibody pair set content: 1. Capture antibody: rabbit MaxPab® affinity purified polyclonal anti-AMBP (100 ug) 2. Detection antibody: mouse monoclonal anti-AMBP, IgG1 Kappa (20 ug) *Reagents are sufficient for at least 1-2 x 96 well plates using recommended protocols.
Storage Instruction	Store reagents of the antibody pair set at -20°C or lower. Please aliquot to avoid repeated freeze thaw cycle. Reagents should be returned to -20°C storage immediately after use.

Applications

- ELISA Pair (Recombinant protein)

[Protocol Download](#)

Gene Info — AMBP

Entrez GeneID [259](#)**Gene Name** AMBP**Gene Alias** EDC1, HCP, HI30, IATIL, ITI, ITIL, ITILC, UTI**Gene Description** alpha-1-microglobulin/bikunin precursor**Omim ID** [176870](#)**Gene Ontology** [Hyperlink](#)

Gene Summary This gene encodes a complex glycoprotein secreted in plasma. The precursor is proteolytically processed into distinct functioning proteins: alpha-1-microglobulin, which belongs to the superfamily of lipocalin transport proteins and may play a role in the regulation of inflammatory processes, and bikunin, which is a urinary trypsin inhibitor belonging to the superfamily of Kunitz-type protease inhibitors and plays an important role in many physiological and pathological processes. This gene is located on chromosome 9 in a cluster of lipocalin genes. [provided by RefSeq]

Other Designations OTTHUMP00000021967|OTTHUMP00000063975|alpha-1-microglobulin/bikunin|bikunin|complex-forming glycoprotein heterogeneous in charge|growth-inhibiting protein 19|inter-alpha-trypsin inhibitor light chain|protein HC|trypstatin|uristatin|uronic-acid-rich protei

Disease

- [Cardiovascular Diseases](#)
- [Diabetes Mellitus](#)
- [Edema](#)
- [Kidney Calculi](#)