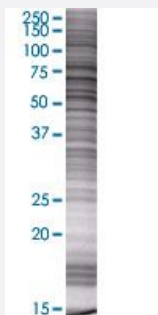


AMBN 293T Cell Transient Overexpression Lysate(Denatured)

Catalog # H00000258-T01

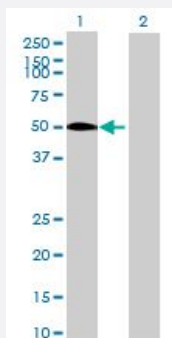
Size 100 uL

Applications



SDS-PAGE Gel

AMBN transfected lysate.



Western Blot

Lane 1: AMBN transfected lysate (48.3 KDa)

Lane 2: Non-transfected lysate.

Specification

Transfected Cell Line	293T
Plasmid	pCMV-AMBN full-length
Host	Human
Theoretical MW (kDa)	48.3
Interspecies Antigen Sequence	Mouse (58); Rat (61)

Quality Control Testing

Transient overexpression cell lysate was tested with Anti-AMBN antibody ([H00000258-B01](#)) by Western Blots.
SDS-PAGE Gel
AMBN transfected lysate.
Western Blot
Lane 1: AMBN transfected lysate (48.3 KDa)
Lane 2: Non-transfected lysate.

Storage Buffer

1X Sample Buffer (50 mM Tris-HCl, 2% SDS, 10% glycerol, 300 mM 2-mercaptoethanol, 0.01% Bromophenol blue)

Storage Instruction

Store at -80°C. Aliquot to avoid repeated freezing and thawing.

Applications

- Western Blot

Gene Info — AMBN

Entrez GeneID[258](#)**GeneBank Accession#**[NM_016519.4](#)**Protein Accession#**[NP_057603.1](#)**Gene Name**

AMBN

Gene Alias

-

Gene Description

ameloblastin (enamel matrix protein)

Omim ID[601259](#)**Gene Ontology**[Hyperlink](#)**Gene Summary**

Ameloblastin is thought to represent an unique ameloblast-specific gene product that may be important in enamel matrix formation and mineralization. The gene is located on chromosome 4 near other genes associated with mineralized tissues: osteopontin, bone sialoprotein, and bone morphogenetic protein 3. Based on its cytogenetic location, this gene is a candidate gene for one form of the disorder, dentinogenesis imperfecta, and/or the disorder, autosomal dominant amylogenesis imperfecta. [provided by RefSeq]

Other Designations

ameloblastin

Disease

- [Dental Caries](#)