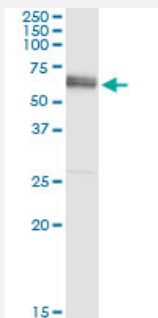


ALPPL2 (Human) IP-WB Antibody Pair

Catalog # H00000251-PW3

Size 1 Set

Applications



Immunoprecipitation of ALPPL2 transfected lysate using rabbit polyclonal anti-ALPPL2 and Protein A Magnetic Bead ([U0007](#)), and immunoblotted with mouse purified polyclonal anti-ALPPL2.

Specification

Product Description	This IP-WB antibody pair set comes with one antibody for immunoprecipitation and another to detect the precipitated protein in western blot.
Reactivity	Human
Quality Control Testing	Immunoprecipitation-Western Blot (IP-WB) Immunoprecipitation of ALPPL2 transfected lysate using rabbit polyclonal anti-ALPPL2 and Protein A Magnetic Bead (U0007), and immunoblotted with mouse purified polyclonal anti-ALPPL2.
Supplied Product	Antibody pair set content: 1. Antibody pair for IP: rabbit polyclonal anti-ALPPL2 (300 ul) 2. Antibody pair for WB: mouse purified polyclonal anti-ALPPL2 (50 ug)
Storage Instruction	Store reagents of the antibody pair set at -20°C or lower. Please aliquot to avoid repeated freeze thaw cycle. Reagents should be returned to -20°C storage immediately after use.

Applications

- Immunoprecipitation-Western Blot

[Protocol Download](#)

Gene Info — ALPPL2

Entrez GeneID	251
Gene Name	ALPPL2
Gene Alias	ALPG, ALPPL, GCAP
Gene Description	alkaline phosphatase, placental-like 2
Omim ID	171810
Gene Ontology	Hyperlink
Gene Summary	There are at least four distinct but related alkaline phosphatases: intestinal, placental, placental-like, and liver/bone/kidney (tissue non-specific). The product of this gene is a membrane bound glycosylated enzyme, localized to testis, thymus and certain germ cell tumors, that is closely related to both the placental and intestinal forms of alkaline phosphatase. [provided by RefSeq]
Other Designations	Nagao isozyme germ cell alkaline phosphatase placental-like alkaline phosphatase testicular and thymus alkaline phosphatase

Pathway

- [Folate biosynthesis](#)
- [gamma-Hexachlorocyclohexane degradation](#)
- [Metabolic pathways](#)