

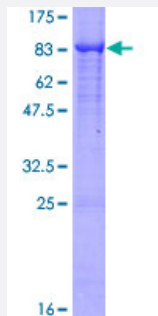
Full-Length

# ALPP (Human) Recombinant Protein (P01)

Catalog # H00000250-P01

Size 25 ug, 10 ug

## Applications



## Specification

### Product Description

Human ALPP full-length ORF ( NP\_001623.3, 1 a.a. - 535 a.a.) recombinant protein with GST-tag at N-terminal.

### Sequence

MLGPCMLLLLLLLGLRLQLSLGIIPVEEENPDFWNREAAEALGAAKKLQPAQTAAKNLIIFLDGDMG  
VSTVTAARILKGQKKDKLGPEIPLAMDRFPYVALSKTYNVDKHVPDSGATATAYLCGVKGNFQTIG  
LSAAARFNQCNTTRGNEVISVMNRAKKAGKSVGVTTRVQHASPAGTYAHTVNRNWYSADVP  
ASARQEGCQDIATQLISNMDIDVILGGGRKYMFRMGTPDPEYPDDYSQGGTRLDGKNLVQEWLAK  
RQGARYVWNRTELMQASLDPSVTHLMGLFEPGDMKYEIHRDSTLDPSLMEMTEAALRLLSRNPR  
GFFLFVEGGRIDHGHESRAYRALTETIMFDDAIERAGQLTSEEDTLSLVTADHSHVFSFGGYPLR  
GSSIFGLAPGKARDRKAYTVLLYGNPGYVLKDGARPDVTESESGSPEYRQQSAVPLDEETHAG  
EDVAVFARGPQAHLVHGVQEQTFAHVMFAACLEPYTACDLAPPAGTTDAAHPGRSVVPALLP  
LLAGTLLLLLETATAP

### Host

Wheat Germ (in vitro)

### Theoretical MW (kDa)

84.4

### Interspecies Antigen Sequence

Mouse (76); Rat (76)

### Preparation Method

[in vitro wheat germ expression system](#)

### Purification

Glutathione Sepharose 4 Fast Flow

Quality Control Testing	12.5% SDS-PAGE Stained with Coomassie Blue.
Storage Buffer	50 mM Tris-HCl, 10 mM reduced Glutathione, pH=8.0 in the elution buffer.
Storage Instruction	Store at -80°C. Aliquot to avoid repeated freezing and thawing.
Note	Best use within three months from the date of receipt of this protein.

## Applications

- Enzyme-linked Immunoabsorbent Assay
- Western Blot (Recombinant protein)
- Antibody Production
- Protein Array

## Gene Info — ALPP

Entrez GeneID	<a href="#">250</a>
GeneBank Accession#	<a href="#">NM_001632.3</a>
Protein Accession#	<a href="#">NP_001623.3</a>
Gene Name	ALPP
Gene Alias	ALP, FLJ61142, PALP, PLAP
Gene Description	alkaline phosphatase, placental (Regan isozyme)
Omim ID	<a href="#">171800</a>
Gene Ontology	<a href="#">Hyperlink</a>

Gene Summary	<p>There are at least four distinct but related alkaline phosphatases: intestinal, placental, placental-like, and liver/bone/kidney (tissue non-specific). The first three are located together on chromosome 2 while the tissue non-specific form is located on chromosome 1. The product of this gene is a membrane bound glycosylated enzyme, also referred to as the heat stable form, that is expressed primarily in the placenta although it is closely related to the intestinal form of the enzyme as well as to the placental-like form. The coding sequence for this form of alkaline phosphatase is unique in that the 3' untranslated region contains multiple copies of an Alu family repeat. In addition, this gene is polymorphic and three common alleles (type 1, type 2 and type 3) for this form of alkaline phosphatase have been well characterized. [provided by RefSeq]</p>
--------------	--

**Other Designations**

alkaline phosphomonoesterase|glycerophosphatase|placental alkaline phosphatase

**Pathway**

- [Folate biosynthesis](#)
- [gamma-Hexachlorocyclohexane degradation](#)
- [Metabolic pathways](#)

**Disease**

- [Birth Weight](#)
- [Fetal Death](#)