

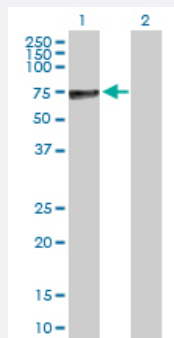
MaxPab®

ALPP purified MaxPab rabbit polyclonal antibody (D01P)

Catalog # H00000250-D01P

Size 100 ug

Applications



Western Blot (Transfected lysate)

Western Blot analysis of ALPP expression in transfected 293T cell line ([H00000250-T01](#)) by ALPP MaxPab polyclonal antibody.

Lane 1: ALPP transfected lysate(58.00 KDa).

Lane 2: Non-transfected lysate.

Specification

Product Description	Rabbit polyclonal antibody raised against a full-length human ALPP protein.
Immunogen	ALPP (NP_001623.3, 1 a.a. ~ 535 a.a) full-length human protein.
Sequence	MLGPCMLLLLLLLGLRLQLSLGIIPVEEENPDFWNREAAEALGAACKLQPAQTAAKNLIIFLDGDMGVSTVTAARILKGQKKDKLGPEIPLAMDRFPYVALSKTYNVDKHPD SGATATAYLCGVKGNFQTIGLSAAARFNQCNTTRGNEVISVMNRAKKAGKSVGVTTRVQHASPAGTYAHTVNRNWYSDADVPASARQEGCQDIATQLISNMDIDVILGGGRKYMFRMGTPDPEYPDDYSQGGTRLDGKNLVQEWLAKRQGARYVWNRTELMQASLDPSVTHLMGLFEPGDMKYEIHRDSTLDP SLMEMTEAALRLLSRNPRGFFLFVEGGRIDHGHESRAYRALTETIMFDDAIERAGQLTSEEDTSLSLVTADHSHVFSFGGYPLRGSSIFGLAPGKARDRKAYTVLLYGNPGYVLKDGARPDVTESESGSPEYRQQSAVPLDEETHAGEDVAVFARGPQAHLVHGVQEQTFAHVMAFAACLEPYTACDLAPPAGTTDAAHPGRSVVPALLP LLAGTLLLLLETATAP
Host	Rabbit
Reactivity	Human
Interspecies Antigen Sequence	Mouse (76); Rat (76)
Quality Control Testing	Antibody reactive against mammalian transfected lysate.

Storage Buffer

In 1x PBS, pH 7.4

Storage Instruction

Store at -20°C or lower. Aliquot to avoid repeated freezing and thawing.

Applications

- Western Blot (Transfected lysate)

Western Blot analysis of ALPP expression in transfected 293T cell line ([H00000250-T01](#)) by ALPP MaxPab polyclonal antibody.

Lane 1: ALPP transfected lysate(58.00 KDa).

Lane 2: Non-transfected lysate.

[Protocol Download](#)

Gene Info — ALPP

Entrez GeneID[250](#)**GeneBank Accession#**[NM_001632.3](#)**Protein Accession#**[NP_001623.3](#)**Gene Name**

ALPP

Gene Alias

ALP, FLJ61142, PALP, PLAP

Gene Description

alkaline phosphatase, placental (Regan isozyme)

Omim ID[171800](#)**Gene Ontology**[Hyperlink](#)**Gene Summary**

There are at least four distinct but related alkaline phosphatases: intestinal, placental, placental-like, and liver/bone/kidney (tissue non-specific). The first three are located together on chromosome 2 while the tissue non-specific form is located on chromosome 1. The product of this gene is a membrane bound glycosylated enzyme, also referred to as the heat stable form, that is expressed primarily in the placenta although it is closely related to the intestinal form of the enzyme as well as to the placental-like form. The coding sequence for this form of alkaline phosphatase is unique in that the 3' untranslated region contains multiple copies of an Alu family repeat. In addition, this gene is polymorphic and three common alleles (type 1, type 2 and type 3) for this form of alkaline phosphatase have been well characterized. [provided by RefSeq]

Other Designations

alkaline phosphomonoesterase|glycerophosphatase|placental alkaline phosphatase

Publication Reference

- [PAI-1 is involved in delayed bone repair induced by glucocorticoids in mice.](#)

Okada K, Okamoto T, Okumoto K, Takafuji Y, Ishida M, Kawao N, Matsuo O, Kaji H.

Bone 2020 May; 134:115310.

Application: IF, Mouse, Bone

Pathway

- [Folate biosynthesis](#)
- [gamma-Hexachlorocyclohexane degradation](#)
- [Metabolic pathways](#)

Disease

- [Birth Weight](#)
- [Fetal Death](#)