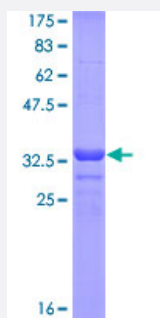


# ALPI (Human) Recombinant Protein (Q01)

Catalog # H00000248-Q01

Size 25 ug, 10 ug

## Applications



## Specification

Product Description	Human ALPI partial ORF ( NP_001622, 74 a.a. - 162 a.a.) recombinant protein with GST-tag at N-terminal.
Sequence	LKGQKNGKLGPEPLAMDRFPYLALSKTYNVDRQVPDSAATATAYLCGVKANFQTIGLSAAARFN QCNTTRGNEVISVMNRAKQAGKSV
Host	Wheat Germ (in vitro)
Theoretical MW (kDa)	35.53
Interspecies Antigen Sequence	Mouse (83); Rat (82)
Preparation Method	<a href="#">in vitro wheat germ expression system</a>
Purification	Glutathione Sepharose 4 Fast Flow
Quality Control Testing	12.5% SDS-PAGE Stained with Coomassie Blue.
Storage Buffer	50 mM Tris-HCl, 10 mM reduced Glutathione, pH=8.0 in the elution buffer.
Storage Instruction	Store at -80°C. Aliquot to avoid repeated freezing and thawing.
Note	Best use within three months from the date of receipt of this protein.

## Applications

- Enzyme-linked Immunoabsorbent Assay
- Western Blot (Recombinant protein)
- Antibody Production
- Protein Array

## Gene Info — ALPI

Entrez GeneID [248](#)

GeneBank Accession# [NM\\_001631](#)

Protein Accession# [NP\\_001622](#)

Gene Name ALPI

Gene Alias IAP

Gene Description alkaline phosphatase, intestinal

Omim ID [171740](#)

Gene Ontology [Hyperlink](#)

**Gene Summary** There are at least four distinct but related alkaline phosphatases: intestinal, placental, placental-like, and liver/bone/kidney (tissue non-specific). The intestinal alkaline phosphatase gene encodes a digestive brush-border enzyme. This enzyme is upregulated during small intestinal epithelial cell differentiation. [provided by RefSeq]

**Other Designations** Kasahara isozyme|alkaline phosphomonoesterase|glycerophosphatase|intestinal alkaline phosphatase

## Pathway

- [Folate biosynthesis](#)
- [gamma-Hexachlorocyclohexane degradation](#)
- [Metabolic pathways](#)