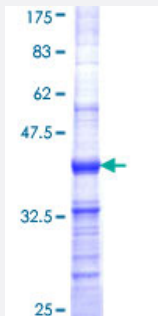


ANXA8 (Human) Recombinant Protein (Q01)

Catalog # H00000244-Q01

Size 25 ug, 10 ug

Applications



Specification

Product Description	Human ANXA8 partial ORF (NP_001621 , 228 a.a. - 326 a.a.) recombinant protein with GST-tag at N-terminal.
Sequence	IEDSIKSETHGSLEEAMLTVVKCTQNLHSYFAERLYAMKGAGTRDGLIRNIVSRSEIDLNLKCHF KKMYGKTLSSMIMEDTSGDYKNALLSLVGSD
Host	Wheat Germ (in vitro)
Theoretical MW (kDa)	36.63
Interspecies Antigen Sequence	Mouse (91); Rat (89)
Preparation Method	in vitro wheat germ expression system
Purification	Glutathione Sepharose 4 Fast Flow
Quality Control Testing	12.5% SDS-PAGE Stained with Coomassie Blue.
Storage Buffer	50 mM Tris-HCl, 10 mM reduced Glutathione, pH=8.0 in the elution buffer.
Storage Instruction	Store at -80°C. Aliquot to avoid repeated freezing and thawing.
Note	Best use within three months from the date of receipt of this protein.

Applications

- Enzyme-linked Immunoabsorbent Assay
- Western Blot (Recombinant protein)
- Antibody Production
- Protein Array

Gene Info — ANXA8L2

Entrez GeneID [244](#)

GeneBank Accession# [NM_001630](#)

Protein Accession# [NP_001621](#)

Gene Name ANXA8L2

Gene Alias ANXA8, FLJ32754, FLJ54151, bA145E20.2

Gene Description annexin A8-like 2

Gene Ontology [Hyperlink](#)

Gene Summary This gene encodes a member of the annexin family of evolutionarily conserved Ca²⁺ and phospholipid binding proteins. The encoded protein may function as an anticoagulant that indirectly inhibits the thromboplastin-specific complex. Overexpression of this gene has been associated with acute myelocytic leukemia. A highly similar duplicated copy of this gene is found in close proximity on the long arm of chromosome 10. [provided by RefSeq]

Other Designations OTTHUMP00000019525|annexin A8L2