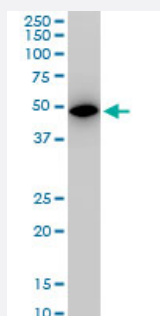


ALDOA monoclonal antibody (M03), clone 2E6

Catalog # H00000226-M03

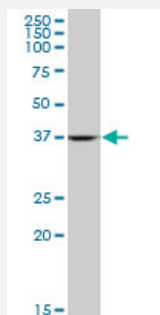
Size 100 ug

Applications



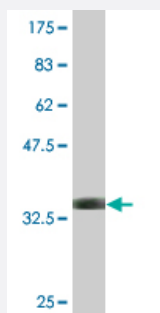
Western Blot (Cell lysate)

ALDOA monoclonal antibody (M03), clone 2E6. Western Blot analysis of ALDOA expression in NIH/3T3(Cat # L018V1).



Western Blot (Cell lysate)

ALDOA monoclonal antibody (M03), clone 2E6. Western Blot analysis of ALDOA expression in HepG2 (Cat # L019V1).



Western Blot detection against Immunogen (33.99 KDa) .

Specification

Product Description

Mouse monoclonal antibody raised against a partial recombinant ALDOA.

Immunogen	ALDOA (AAH10660.1, 21 a.a. ~ 95 a.a) partial recombinant protein with GST tag. MW of the GST tag alone is 26 KDa.
Sequence	HRIVAPGKGILAADESTGSIKRLQSIGTENTENRRFYRQLLLTADDRVNPCIGGVILFHETLYQKADDGRPFP
Host	Mouse
Reactivity	Human, Mouse
Interspecies Antigen Sequence	Mouse (100); Rat (100)
Isotype	IgG2a Kappa
Quality Control Testing	Antibody Reactive Against Recombinant Protein. Western Blot detection against Immunogen (33.99 KDa) .
Storage Buffer	In 1x PBS, pH 7.4
Storage Instruction	Store at -20°C or lower. Aliquot to avoid repeated freezing and thawing.

Applications

- Western Blot (Cell lysate)

ALDOA monoclonal antibody (M03), clone 2E6. Western Blot analysis of ALDOA expression in NIH/3T3(Cat # L018V1).

[Protocol Download](#)

- Western Blot (Cell lysate)

ALDOA monoclonal antibody (M03), clone 2E6. Western Blot analysis of ALDOA expression in HepG2 (Cat # L019V1).

[Protocol Download](#)

- Western Blot (Recombinant protein)

[Protocol Download](#)

- ELISA

Gene Info — ALDOA

Entrez GeneID [226](#)

GeneBank Accession#	BC010660
Protein Accession#	AAH10660.1
Gene Name	ALDOA
Gene Alias	ALDA, MGC10942, MGC17716, MGC17767
Gene Description	aldolase A, fructose-bisphosphate
Omim ID	103850
Gene Ontology	Hyperlink
Gene Summary	<p>This gene product, Aldolase A (fructose-bisphosphate aldolase) is a glycolytic enzyme that catalyzes the reversible conversion of fructose-1,6-bisphosphate to glyceraldehyde 3-phosphate and dihydroxyacetone phosphate. Three aldolase isozymes (A, B, and C), encoded by three different genes, are differentially expressed during development. Aldolase A is found in the developing embryo and is produced in even greater amounts in adult muscle. Aldolase A expression is repressed in adult liver, kidney and intestine and similar to aldolase C levels in brain and other nervous tissue. Aldolase A deficiency has been associated with myopathy and hemolytic anemia. Alternative splicing of this gene results in multiple transcript variants which encode the same protein. [provided by RefSeq]</p>
Other Designations	aldolase A fructose-1,6-bisphosphate triosephosphate-lyase fructose-bisphosphate aldolase A

Pathway

- [Biosynthesis of alkaloids derived from histidine and purine](#)
- [Biosynthesis of alkaloids derived from ornithine](#)
- [Biosynthesis of alkaloids derived from shikimate pathway](#)
- [Biosynthesis of alkaloids derived from terpenoid and polyketide](#)
- [Biosynthesis of phenylpropanoids](#)
- [Biosynthesis of plant hormones](#)
- [Biosynthesis of terpenoids and steroids](#)
- [Carbon fixation in photosynthetic organisms](#)
- [Fructose and mannose metabolism](#)
- [Glycolysis / Gluconeogenesis](#)
- [Metabolic pathways](#)

- [Pentose phosphate pathway](#)

Disease

- [Autistic Disorder](#)
- [Genetic Predisposition to Disease](#)