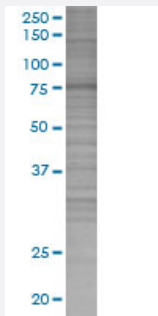


AFP 293T Cell Transient Overexpression Lysate(Denatured)

Catalog # H00000174-T01

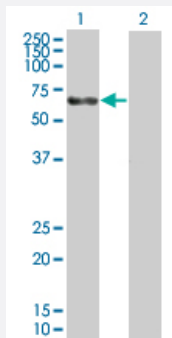
Size 100 uL

Applications



SDS-PAGE Gel

AFP transfected lysate.



Western Blot

Lane 1: AFP transfected lysate (67.1 KDa)

Lane 2: Non-transfected lysate.

Specification

Transfected Cell Line	293T
Plasmid	pCMV-AFP full-length
Host	Human
Theoretical MW (kDa)	67.1
Interspecies Antigen Sequence	Mouse (65); Rat (65)

Quality Control Testing

Transient overexpression cell lysate was tested with Anti-AFP antibody ([H00000174-B01](#)) by Western Blots.
SDS-PAGE Gel
AFP transfected lysate.
Western Blot
Lane 1: AFP transfected lysate (67.1 KDa)
Lane 2: Non-transfected lysate.

Storage Buffer

1X Sample Buffer (50 mM Tris-HCl, 2% SDS, 10% glycerol, 300 mM 2-mercaptoethanol, 0.01% Bromophenol blue)

Storage Instruction

Store at -80°C. Aliquot to avoid repeated freezing and thawing.

Applications

- Western Blot

Gene Info — AFP

Entrez GeneID[174](#)**GeneBank Accession#**[NM_001134](#)**Protein Accession#**[NP_001125](#)**Gene Name**

AFP

Gene Alias

FETA, HPAFP

Gene Description

alpha-fetoprotein

Omim ID[104150](#)**Gene Ontology**[Hyperlink](#)**Gene Summary**

This gene encodes alpha-fetoprotein, a major plasma protein produced by the yolk sac and the liver during fetal life. Alpha-fetoprotein expression in adults is often associated with hepatoma or teratoma. However, hereditary persistence of alpha-fetoprotein may also be found in individuals with no obvious pathology. The protein is thought to be the fetal counterpart of serum albumin, and the alpha-fetoprotein and albumin genes are present in tandem in the same transcriptional orientation on chromosome 4. Alpha-fetoprotein is found in monomeric as well as dimeric and trimeric forms, and binds copper, nickel, fatty acids and bilirubin. The level of alpha-fetoprotein in amniotic fluid is used to measure renal loss of protein to screen for spina bifida and anencephaly. [provided by RefSeq]

Other Designations

OTTHUMP00000160480|alpha-1-fetoprotein|alpha-fetoglobulin

Disease

- [Carcinoma](#)
- [Liver Cirrhosis](#)
- [Liver Neoplasms](#)