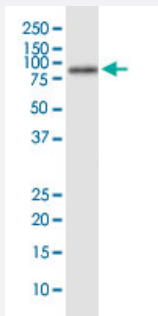


AFP (Human) IP-WB Antibody Pair

Catalog # H00000174-PW3

Size 1 Set

Applications



Immunoprecipitation of AFP transfected lysate using rabbit polyclonal anti-AFP and Protein A Magnetic Bead ([U0007](#)), and immunoblotted with mouse purified polyclonal anti-AFP.

Specification

Product Description	This IP-WB antibody pair set comes with one antibody for immunoprecipitation and another to detect the precipitated protein in western blot.
Reactivity	Human
Quality Control Testing	Immunoprecipitation-Western Blot (IP-WB) Immunoprecipitation of AFP transfected lysate using rabbit polyclonal anti-AFP and Protein A Magnetic Bead (U0007), and immunoblotted with mouse purified polyclonal anti-AFP.
Supplied Product	Antibody pair set content: 1. Antibody pair for IP: rabbit polyclonal anti-AFP (300 ul) 2. Antibody pair for WB: mouse purified polyclonal anti-AFP (50 ug)
Storage Instruction	Store reagents of the antibody pair set at -20°C or lower. Please aliquot to avoid repeated freeze thaw cycle. Reagents should be returned to -20°C storage immediately after use.

Applications

- Immunoprecipitation-Western Blot

[Protocol Download](#)

Gene Info — AFP

Entrez GeneID [174](#)**Gene Name** AFP**Gene Alias** FETA, HPAFP**Gene Description** alpha-fetoprotein**Omim ID** [104150](#)**Gene Ontology** [Hyperlink](#)**Gene Summary**

This gene encodes alpha-fetoprotein, a major plasma protein produced by the yolk sac and the liver during fetal life. Alpha-fetoprotein expression in adults is often associated with hepatoma or teratoma. However, hereditary persistence of alpha-fetoprotein may also be found in individuals with no obvious pathology. The protein is thought to be the fetal counterpart of serum albumin, and the alpha-fetoprotein and albumin genes are present in tandem in the same transcriptional orientation on chromosome 4. Alpha-fetoprotein is found in monomeric as well as dimeric and trimeric forms, and binds copper, nickel, fatty acids and bilirubin. The level of alpha-fetoprotein in amniotic fluid is used to measure renal loss of protein to screen for spina bifida and anencephaly. [provided by RefSeq]

Other Designations OTTHUMP00000160480|alpha-1-fetoprotein|alpha-fetoglobulin

Disease

- [Carcinoma](#)
- [Liver Cirrhosis](#)
- [Liver Neoplasms](#)