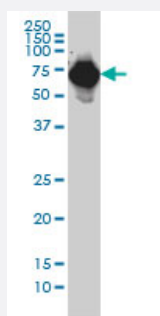


AFP monoclonal antibody (M01), clone 1G7

Catalog # H00000174-M01

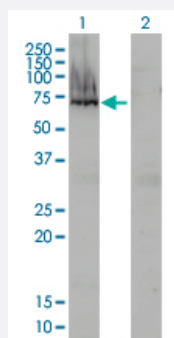
Size 100 ug

Applications



Western Blot (Cell lysate)

AFP monoclonal antibody (M01), clone 1G7 Western Blot analysis of AFP expression in HepG2 (Cat # L019V1).

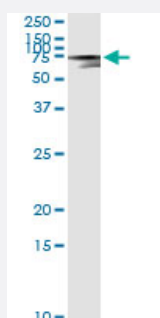


Western Blot (Transfected lysate)

Western Blot analysis of AFP expression in transfected 293T cell line by AFP monoclonal antibody (M01), clone 1G7.

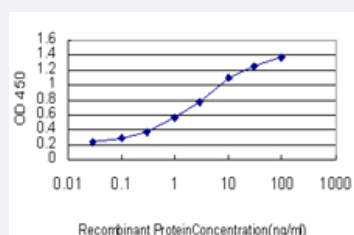
Lane 1: AFP transfected lysate(69 KDa).

Lane 2: Non-transfected lysate.



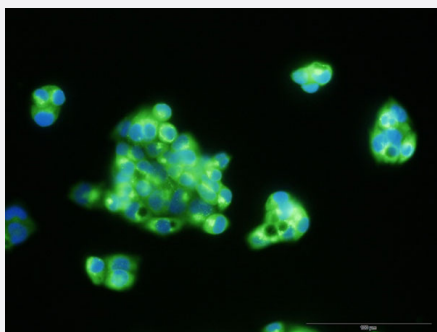
Immunoprecipitation

Immunoprecipitation of AFP transfected lysate using anti-AFP monoclonal antibody and Protein A Magnetic Bead, and immunoblotted with AFP MaxPab rabbit polyclonal antibody.



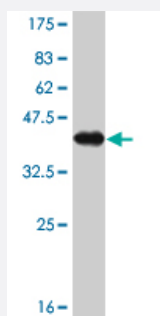
Sandwich ELISA (Recombinant protein)

Detection limit for recombinant GST tagged AFP is approximately 0.03ng/ml as a capture antibody.



Immunofluorescence

Immunofluorescence of monoclonal antibody to AFP on HepG2 cell . [antibody concentration 30 ug/ml]



Western Blot detection against Immunogen (37.84 KDa) .

Specification

Product Description	Mouse monoclonal antibody raised against a partial recombinant AFP.
Immunogen	AFP (AAH27881, 500 a.a. ~ 609 a.a) partial recombinant protein with GST tag. MW of the GST tag alone is 26 KDa.
Sequence	CCTSSYANRRPCFSSLVVDETYVPPAFSDDKFIFHKDLCQAQGVALQTMKQEFLINLVKQKPQITE EQLEAVIADFSGLLEKCCQGQEQEVCFAEEGQKLISKTRAALGV
Host	Mouse
Reactivity	Human
Interspecies Antigen Sequence	Mouse (79); Rat (78)
Isotype	IgG2a Kappa
Quality Control Testing	Antibody Reactive Against Recombinant Protein. Western Blot detection against Immunogen (37.84 KDa) .
Storage Buffer	In 1x PBS, pH 7.4
Storage Instruction	Store at -20°C or lower. Aliquot to avoid repeated freezing and thawing.

Applications

- Western Blot (Cell lysate)

AFP monoclonal antibody (M01), clone 1G7 Western Blot analysis of AFP expression in HepG2 (Cat # L019V1).

[Protocol Download](#)

- Western Blot (Transfected lysate)

Western Blot analysis of AFP expression in transfected 293T cell line by AFP monoclonal antibody (M01), clone 1G7.

Lane 1: AFP transfected lysate(69 KDa).

Lane 2: Non-transfected lysate.

[Protocol Download](#)

- Western Blot (Recombinant protein)

[Protocol Download](#)

- Immunoprecipitation

Immunoprecipitation of AFP transfected lysate using anti-AFP monoclonal antibody and Protein A Magnetic Bead, and immunoblotted with AFP MaxPab rabbit polyclonal antibody.

[Protocol Download](#)

- Sandwich ELISA (Recombinant protein)

Detection limit for recombinant GST tagged AFP is approximately 0.03ng/ml as a capture antibody.

[Protocol Download](#)

- ELISA

- Immunofluorescence

Immunofluorescence of monoclonal antibody to AFP on HepG2 cell . [antibody concentration 30 ug/ml]

Gene Info — AFP

Entrez GeneID	174
---------------	---------------------

GeneBank Accession#	BC027881
---------------------	--------------------------

Protein Accession#	AAH27881
--------------------	--------------------------

Gene Name	AFP
Gene Alias	FETA, HPAFP
Gene Description	alpha-fetoprotein
Omim ID	104150
Gene Ontology	Hyperlink
Gene Summary	This gene encodes alpha-fetoprotein, a major plasma protein produced by the yolk sac and the liver during fetal life. Alpha-fetoprotein expression in adults is often associated with hepatoma or teratoma. However, hereditary persistence of alpha-fetoprotein may also be found in individuals with no obvious pathology. The protein is thought to be the fetal counterpart of serum albumin, and the alpha-fetoprotein and albumin genes are present in tandem in the same transcriptional orientation on chromosome 4. Alpha-fetoprotein is found in monomeric as well as dimeric and trimeric forms, and binds copper, nickel, fatty acids and bilirubin. The level of alpha-fetoprotein in amniotic fluid is used to measure renal loss of protein to screen for spina bifida and anencephaly. [provided by RefSeq]
Other Designations	OTTHUMP00000160480 alpha-1-fetoprotein alpha-fetoglobulin

Publication Reference

- [Derivation of porcine extraembryonic endoderm-like cells from blastocysts.](#)

Li Y, Wu S, Yu Y, Zhang H, Wei R, Lv J, Cai M, Yang X, Zhang Y, Liu Z.

Cell proliferation 2020 Apr; 53(4):e12782.

Application: IF, Pig, pXEN-like cells

- [A magneto-microfluidic platform for fluorescence immunosensing using quantum dot nanoparticles.](#)

Tsai HY, Wu HH, Chou BC, Li CS, Gau BZ, Lin ZY, Fuh CB.

Nanotechnology 2019 Dec; 30(50):505101.

Application: Magnetic immunoassay, Recombinant protein

- [Human induced pluripotent stem cell line HMUi001-A derived from corneal stromal cells.](#)

Bikkuzin T, Shi Y, Sun B, Guo Y, Jin X, Han Z, Pavlov V, Zhang H.

Stem Cell Research 2019 May; 37:101409.

Application: ICC, IF, Human, Human induced pluripotent stem cell line HMUi001-A

- [Magnetofluorescent nanocomposites and quantum dots used for optimal application in magnetic fluorescence-linked immunoassay.](#)

Tsai HY, Li SY, Fuh CB.

Analytical and Bioanalytical Chemistry 2018 Mar; 410(7):1923.

Application: ELISA, Serum samples

- [Multifunctional Nanoparticles for Protein Detections in Thin Channels.](#)

Hweiyen Tsai, Weimin Lin, Mingchieh Chuang, Yishuan Lu, C Bor Fuh.

Biosensors & Bioelectronics 2017 Apr; 90:153.

Application: ELISA, Human, Human serum, Recombinant protein

- [A single-step enzyme immunoassay capillary sensor composed of functional multilayer coatings for diagnosis marker proteins.](#)

Funano SI, Sugahara M, Henares TG, Sueyoshi K, Endo T, Hisamoto H.

Analyst 2015 Mar; 140(5):1459.

Application: EIA, Recombinant protein

- [Immunodevice for simultaneous detection of two relevant tumor markers based on separation of different microparticles by dielectrophoresis.](#)

Ramón-Azcón J, Yasukawa T, Mizutani F.

Biosensors & Bioelectronics 2011 Oct; 28(1):443.

Application: Func, Particles

Disease

- [Carcinoma](#)
- [Liver Cirrhosis](#)
- [Liver Neoplasms](#)