

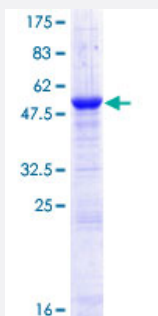
Full-Length

# CRISP1 (Human) Recombinant Protein (P01)

Catalog # H00000167-P01

Size 25 ug, 10 ug

## Applications



## Specification

### Product Description

Human CRISP1 full-length ORF ( NP\_001122.2, 1 a.a. - 249 a.a.) recombinant protein with GST-tag at N-terminal.

### Sequence

MEIKHLLFLVAAACLLPMLSMKKKSARDQFNKLVTDLPNVQEEVNIHNLRRRVVPPASNMLKM  
SWSEEEAAQNARIFSKYCDMTESNPLERRLPNTFCGENMHMTSYPVSWSSVIGVWYSESTSFKHG  
EWTITDDDDITTDHYTQVWATSYLIGCAIASCRQQGSPRYLYVCHYCHEGNDPETHKNEPYKTGVPC  
EACPSNCKEDKLCTNPCIYDEYFDCDIQVHYLGCHNSTILFCKATCLCDTEIK

### Host

Wheat Germ (in vitro)

### Theoretical MW (kDa)

54.9

### Interspecies Antigen Sequence

Rat (63)

### Preparation Method

[in vitro wheat germ expression system](#)

### Purification

Glutathione Sepharose 4 Fast Flow

### Quality Control Testing

12.5% SDS-PAGE Stained with Coomassie Blue.

### Storage Buffer

50 mM Tris-HCl, 10 mM reduced Glutathione, pH=8.0 in the elution buffer.

### Storage Instruction

Store at -80°C. Aliquot to avoid repeated freezing and thawing.

## Note

Best use within three months from the date of receipt of this protein.

## Applications

- Enzyme-linked Immunoabsorbent Assay
- Western Blot (Recombinant protein)
- Antibody Production
- Protein Array

## Gene Info — CRISP1

Entrez GeneID [167](#)

GeneBank Accession# [NM\\_001131.2](#)

Protein Accession# [NP\\_001122.2](#)

Gene Name CRISP1

Gene Alias AEGL1, ARP, CRISP-1, HSCRISP1D, HSCRISP1G, HUMARP

Gene Description cysteine-rich secretory protein 1

Omim ID [601193](#)

Gene Ontology [Hyperlink](#)

**Gene Summary**

Fertilization consists of a sequence of specific cell-cell interactions culminating in the fusion of the sperm and egg plasma membranes. Recognition, binding, and fusion occur through the interaction of complementary molecules that are localized to specific domains of the sperm and egg plasma membranes. In the sperm, the postacrosomal region or equatorial segment is involved in sperm-egg plasma membrane fusion. The protein encoded by this gene is a member of the cysteine-rich secretory protein (CRISP) family. This protein is expressed in the epididymis, is secreted into the epididymal lumen, and binds to the postacrosomal region of the sperm head where it plays a role at fertilization in sperm-egg fusion through complementary sites localized on the egg surface. Two isoforms are encoded by transcript variants of this gene. [provided by RefSeq]

**Other Designations**

AEG-related protein|OTTHUMP00000016592|acidic epididymal glycoprotein-like 1|cysteine-rich secretory protein-1 delta|protein DE-like

## Publication Reference

- [Exercise-Regulated Adipokines as Therapy for Diabetes Management.](#)

Laurie J. GOODYEAR, Kristin I. STANFORD

United States Patent Application Publication 2016 Jan; [Epub].

Application: Incubation, Mouse, C2C12 cells, WT-1 brown adipocytes