

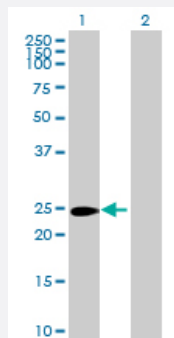
MaxPab®

CRISP1 MaxPab mouse polyclonal antibody (B01P)

Catalog # H00000167-B01P

Size 50 ug

Applications



Western Blot (Transfected lysate)

Western Blot analysis of CRISP1 expression in transfected 293T cell line ([H00000167-T01](#)) by CRISP1 MaxPab polyclonal antibody.

Lane 1: CRISP1 transfected lysate (27.39 kDa).

Lane 2: Non-transfected lysate.

Specification

Product Description	Mouse polyclonal antibody raised against a full-length human CRISP1 protein.
Immunogen	CRISP1 (NP_001122, 1 a.a. ~ 249 a.a) full-length human protein.
Sequence	MEIKHLLFLVAAACLLPMLSMKKKSARDQFNKLVTDLPNVQEEVNIHNLRRRVVPPASNMLKM SWSEEAQNAIRIFSKYCDMTESNPLERRLPNTFCGENMHMTSYPVSWSSVIGVWYSESTSFKHG EWTTTDDDDITTDHYTQM/WATSYLIGCAIASCRQQGSPRYLYVCHYCHEGNDPETHKNEPYKTGVPC EACPSNCEDEKLCITNPCTIYDEYFDCDIQVHYLGCHNSTILFCKATCLCDTEIK
Host	Mouse
Reactivity	Human
Interspecies Antigen Sequence	Rat (63)
Quality Control Testing	Antibody reactive against mammalian transfected lysate.
Storage Buffer	In 1x PBS, pH 7.4
Storage Instruction	Store at -20°C or lower. Aliquot to avoid repeated freezing and thawing.

Applications

- Western Blot (Transfected lysate)

Western Blot analysis of CRISP1 expression in transfected 293T cell line ([H00000167-T01](#)) by CRISP1 MaxPab polyclonal antibody.

Lane 1: CRISP1 transfected lysate(27.39 KDa).

Lane 2: Non-transfected lysate.

[Protocol Download](#)

Gene Info — CRISP1

Entrez GeneID [167](#)

GeneBank Accession# [NM_001131](#)

Protein Accession# [NP_001122](#)

Gene Name CRISP1

Gene Alias AEGL1, ARP, CRISP-1, HSCRISP1D, HSCRISP1G, HUMARP

Gene Description cysteine-rich secretory protein 1

Omim ID [601193](#)

Gene Ontology [Hyperlink](#)

Gene Summary

Fertilization consists of a sequence of specific cell-cell interactions culminating in the fusion of the sperm and egg plasma membranes. Recognition, binding, and fusion occur through the interaction of complementary molecules that are localized to specific domains of the sperm and egg plasma membranes. In the sperm, the postacrosomal region or equatorial segment is involved in sperm-egg plasma membrane fusion. The protein encoded by this gene is a member of the cysteine-rich secretory protein (CRISP) family. This protein is expressed in the epididymis, is secreted into the epididymal lumen, and binds to the postacrosomal region of the sperm head where it plays a role at fertilization in sperm-egg fusion through complementary sites localized on the egg surface. Two isoforms are encoded by transcript variants of this gene. [provided by RefSeq]

Other Designations

AEG-related protein|OTTHUMP00000016592|acidic epididymal glycoprotein-like 1|cysteine-rich secretory protein-1 delta|protein DE-like