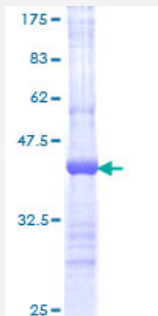


AES (Human) Recombinant Protein (Q01)

Catalog # H00000166-Q01

Size 25 ug, 10 ug

Applications



Specification

Product Description	Human AES partial ORF (NP_001121, 2 a.a. - 110 a.a.) recombinant protein with GST-tag at N-terminal.
Sequence	MFPQSRHSGSSHLPQQLKFTTSDSCDRKDEFQLLQAQYHSLKLECDKLASEKSEMQRHYVMYY EMSYGLNIEMHKQAEMVKRLNGICAQVLPYLSQEHQQQVLGAIER
Host	Wheat Germ (in vitro)
Theoretical MW (kDa)	37.73
Interspecies Antigen Sequence	Mouse (100); Rat (100)
Preparation Method	in vitro wheat germ expression system
Purification	Glutathione Sepharose 4 Fast Flow
Quality Control Testing	12.5% SDS-PAGE Stained with Coomassie Blue.
Storage Buffer	50 mM Tris-HCl, 10 mM reduced Glutathione, pH=8.0 in the elution buffer.
Storage Instruction	Store at -80°C. Aliquot to avoid repeated freezing and thawing.
Note	Best use within three months from the date of receipt of this protein.

Applications

- Enzyme-linked Immunoabsorbent Assay
- Western Blot (Recombinant protein)
- Antibody Production
- Protein Array

Gene Info — AES

Entrez GeneID [166](#)

GeneBank Accession# [NM_001130](#)

Protein Accession# [NP_001121](#)

Gene Name AES

Gene Alias AES-1, AES-2, ESP1, GRG, GRG5, TLE5

Gene Description amino-terminal enhancer of split

Omim ID [600188](#)

Gene Ontology [Hyperlink](#)

Gene Summary The protein encoded by this gene is similar in sequence to the amino terminus of Drosophila enhancer of split groucho, a protein involved in neurogenesis during embryonic development. The encoded protein, which belongs to the groucho/TLE family of proteins, can function as a homooligomer or as a heterooligomer with other family members to dominantly repress the expression of other family member genes. Three transcript variants encoding different isoforms have been found for this gene. [provided by RefSeq]

Other Designations -