

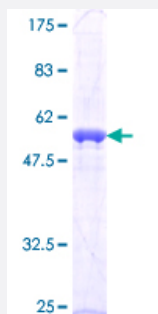
Full-Length

# AES (Human) Recombinant Protein (P01)

Catalog # H00000166-P01

Size 25 ug, 10 ug

## Applications



## Specification

### Product Description

Human AES full-length ORF ( NP\_945320.1, 1 a.a. - 264 a.a.) recombinant protein with GST-tag at N-terminal.

### Sequence

MCHKNGFPQEGGITAFLQKRKLRLSKNHRPARAKVTEHVRGTRPGRATAGPAASTRAAGSLFF  
DRWGNRGPAGCRGSSHLPPQLKFTTSDSCDRIKDEFQLLQAQYHSLKLECDKLASEKSEMQRH  
YVMYEMSYGLNIEMHKQAEIVKRLNGICAQVLPYLSQEHQQQVLGAIERAKQVTAPELNSIIRQQL  
QAHQLSQLALALPLTLPVGLQPPSLPAVSAGTGLLSLSALGSQAHLKEDKNGHDGDTHQED  
DGEKSD

### Host

Wheat Germ (in vitro)

### Theoretical MW (kDa)

55.5

### Interspecies Antigen Sequence

Mouse (99); Rat (99)

### Preparation Method

[in vitro wheat germ expression system](#)

### Purification

Glutathione Sepharose 4 Fast Flow

### Quality Control Testing

12.5% SDS-PAGE Stained with Coomassie Blue.

### Storage Buffer

50 mM Tris-HCl, 10 mM reduced Glutathione, pH=8.0 in the elution buffer.

**Storage Instruction**

Store at -80°C. Aliquot to avoid repeated freezing and thawing.

**Note**

Best use within three months from the date of receipt of this protein.

## Applications

- Enzyme-linked Immunoabsorbent Assay
- Western Blot (Recombinant protein)
- Antibody Production
- Protein Array

## Gene Info — AES

**Entrez GeneID**[166](#)**GeneBank Accession#**[NM\\_198969.1](#)**Protein Accession#**[NP\\_945320.1](#)**Gene Name**

AES

**Gene Alias**

AES-1, AES-2, ESP1, GRG, GRG5, TLE5

**Gene Description**

amino-terminal enhancer of split

**Omim ID**[600188](#)**Gene Ontology**[Hyperlink](#)**Gene Summary**

The protein encoded by this gene is similar in sequence to the amino terminus of Drosophila enhancer of split groucho, a protein involved in neurogenesis during embryonic development. The encoded protein, which belongs to the groucho/TLE family of proteins, can function as a homooligomer or as a heterooligomer with other family members to dominantly repress the expression of other family member genes. Three transcript variants encoding different isoforms have been found for this gene. [provided by RefSeq]

**Other Designations**

-