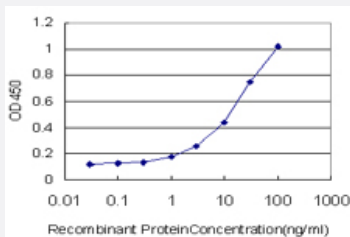


ADCY2 monoclonal antibody (M01), clone 1D4

Catalog # H00000108-M01

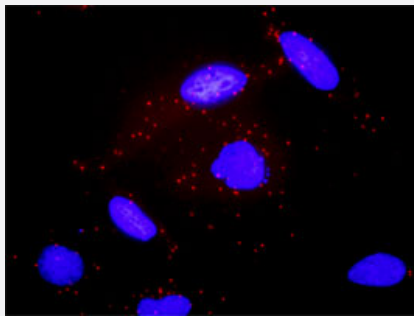
Size 100 ug

Applications



Sandwich ELISA (Recombinant protein)

Detection limit for recombinant GST tagged ADCY2 is approximately 1ng/ml as a capture antibody.



In situ Proximity Ligation Assay (Cell)

Proximity Ligation Analysis of protein-protein interactions between GNAS and ADCY2. HeLa cells were stained with anti-GNAS rabbit purified polyclonal 1:1200 and anti-ADCY2 mouse monoclonal antibody 1:50. Each red dot represents the detection of protein-protein interaction complex, and nuclei were counterstained with DAPI (blue).

Specification

Product Description	Mouse monoclonal antibody raised against a partial recombinant ADCY2.
Immunogen	ADCY2 (NP_065433, 977 a.a. ~ 1086 a.a) partial recombinant protein with GST tag. MW of the GST tag alone is 26 KDa.
Sequence	GKLDANKHSFNDFKLRVGINHGHPVIAGVIGAQKPQYDWGNTVNVASRMDSTGVLDKIQVTEETSL VLQTLGYTCTCRGIINVKGKGLKTYFVNTEMSRSLSQSNVAS
Host	Mouse
Reactivity	Human

Interspecies Antigen Sequence	Mouse (98); Rat (98)
Isotype	IgG2b Kappa
Quality Control Testing	Antibody Reactive Against Recombinant Protein.
Storage Buffer	In 1x PBS, pH 7.4
Storage Instruction	Store at -20°C or lower. Aliquot to avoid repeated freezing and thawing.

Applications

- Sandwich ELISA (Recombinant protein)

Detection limit for recombinant GST tagged ADCY2 is approximately 1ng/ml as a capture antibody.

[Protocol Download](#)

- ELISA

- *In situ* Proximity Ligation Assay (Cell)

Proximity Ligation Analysis of protein-protein interactions between GNAS and ADCY2. HeLa cells were stained with anti-GNAS rabbit purified polyclonal 1:1200 and anti-ADCY2 mouse monoclonal antibody 1:50. Each red dot represents the detection of protein-protein interaction complex, and nuclei were counterstained with DAPI (blue).

Gene Info — ADCY2

Entrez GeneID	108
GeneBank Accession#	NM_020546
Protein Accession#	NP_065433
Gene Name	ADCY2
Gene Alias	AC2, FLJ16822, FLJ45092, HBAC2, KIAA1060, MGC133314
Gene Description	adenylate cyclase 2 (brain)
Omim ID	103071
Gene Ontology	Hyperlink

Gene Summary

This gene encodes a member of the family of adenylate cyclases, which are membrane-associated enzymes that catalyze the formation of the secondary messenger cyclic adenosine monophosphate (cAMP). This enzyme is insensitive to Ca(2+)/calmodulin, and is stimulated by the G protein beta and gamma subunit complex. [provided by RefSeq]

Other Designations

3',5'-cyclic AMP synthetase|ATP pyrophosphate-lyase|adenylate cyclase 2|adenylate cyclase III|adenyl cyclase 2|type II adenylate cyclase

Pathway

- [Calcium signaling pathway](#)
- [Chemokine signaling pathway](#)
- [Gap junction](#)
- [GnRH signaling pathway](#)
- [Melanogenesis](#)
- [Purine metabolism](#)
- [Vascular smooth muscle contraction](#)

Disease

- [Cognition](#)
- [Genetic Predisposition to Disease](#)
- [Kidney Failure](#)
- [Schizophrenia](#)
- [Schizophrenic Psychology](#)
- [Tobacco Use Disorder](#)
- [Weight Gain](#)