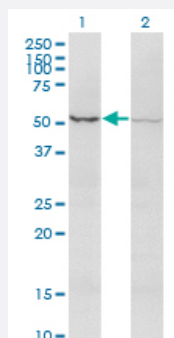


ACVR2B monoclonal antibody (M03), clone 1C11

Catalog # H00000093-M03

Size 100 ug

Applications

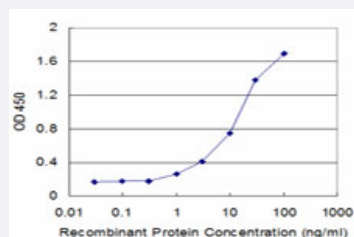


Western Blot (Transfected lysate)

Western Blot analysis of ACVR2B expression in transfected 293T cell line by ACVR2B monoclonal antibody (M03), clone 1C11.

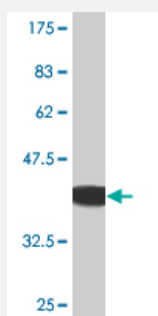
Lane 1: ACVR2B transfected lysate (Predicted MW: 34.2 KDa).

Lane 2: Non-transfected lysate.



Sandwich ELISA (Recombinant protein)

Detection limit for recombinant GST tagged ACVR2B is approximately 1ng/ml as a capture antibody.



Western Blot detection against Immunogen (36.63 KDa) .

Specification

Product Description

Mouse monoclonal antibody raised against a partial recombinant ACVR2B.

Immunogen	ACVR2B (NP_001097, 21 a.a. ~ 120 a.a) partial recombinant protein with GST tag. MW of the GST tag alone is 26 KDa.
Sequence	RGEAETRECIYNNANWELERTNQSGLERCEGEQDKRLHCYASWRNSSGTIELVKKGCWLDDFNC YDRQECVATEENPQVYFCCCEGNFCNERFTHLPEAG
Host	Mouse
Reactivity	Human
Interspecies Antigen Sequence	Mouse (99); Rat (99)
Isotype	IgG2a Kappa
Quality Control Testing	Antibody Reactive Against Recombinant Protein. Western Blot detection against Immunogen (36.63 KDa) .
Storage Buffer	In 1x PBS, pH 7.4
Storage Instruction	Store at -20°C or lower. Aliquot to avoid repeated freezing and thawing.

Applications

- Western Blot (Transfected lysate)

Western Blot analysis of ACVR2B expression in transfected 293T cell line by ACVR2B monoclonal antibody (M03), clone 1C11.

Lane 1: ACVR2B transfected lysate (Predicted MW: 34.2 KDa).

Lane 2: Non-transfected lysate.

[Protocol Download](#)

- Western Blot (Recombinant protein)

[Protocol Download](#)

- Sandwich ELISA (Recombinant protein)

Detection limit for recombinant GST tagged ACVR2B is approximately 1ng/ml as a capture antibody.

[Protocol Download](#)

- ELISA

Gene Info — ACVR2B

Entrez GeneID	93
GeneBank Accession#	NM_001106
Protein Accession#	NP_001097
Gene Name	ACVR2B
Gene Alias	ACTRIIB, ActR-IIIB, MGC116908
Gene Description	activin A receptor, type IIB
Omim ID	602730
Gene Ontology	Hyperlink
Gene Summary	<p>Activins are dimeric growth and differentiation factors which belong to the transforming growth factor-beta (TGF-beta) superfamily of structurally related signaling proteins. Activins signal through a heteromeric complex of receptor serine kinases which include at least two type I (I and IB) and two type II (II and IIB) receptors. These receptors are all transmembrane proteins, composed of a ligand-binding extracellular domain with cysteine-rich region, a transmembrane domain, and a cytoplasmic domain with predicted serine/threonine specificity. Type I receptors are essential for signaling; and type II receptors are required for binding ligands and for expression of type I receptors. Type I and II receptors form a stable complex after ligand binding, resulting in phosphorylation of type I receptors by type II receptors. Type II receptors are considered to be constitutively active kinases. This gene encodes activin A type IIB receptor, which displays a 3- to 4-fold higher affinity for the ligand than activin A type II receptor. [provided by RefSeq]</p>
Other Designations	activin A type IIB receptor

Pathway

- [Cytokine-cytokine receptor interaction](#)
- [TGF-beta signaling pathway](#)

Disease

- [Genetic Predisposition to Disease](#)
- [Hyperparathyroidism](#)
- [Obesity](#)

- [Ovarian Failure](#)
- [Polycystic Ovary Syndrome](#)
- [Puberty](#)
- [Thrombophilia](#)
- [Tobacco Use Disorder](#)