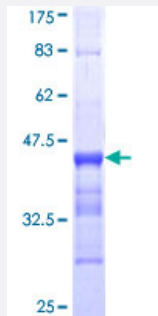


ACTG2 (Human) Recombinant Protein (Q01)

Catalog # H00000072-Q01

Size 25 ug, 10 ug

Applications



Specification

Product Description	Human ACTG2 partial ORF (NP_001606, 1 a.a. - 100 a.a.) recombinant protein with GST-tag at N-terminal.
Sequence	MCEEETALVCDNGSGLCKAGFAGDDAPRAVFPSVGRPRHQGVMMVGMGQKDSYVGDEAQS KRGILTLKYPIEHGITNWDDMEKWHHSFYNELRVAPE
Host	Wheat Germ (in vitro)
Theoretical MW (kDa)	36.52
Interspecies Antigen Sequence	Mouse (100); Rat (100)
Preparation Method	in vitro wheat germ expression system
Purification	Glutathione Sepharose 4 Fast Flow
Quality Control Testing	12.5% SDS-PAGE Stained with Coomassie Blue.
Storage Buffer	50 mM Tris-HCl, 10 mM reduced Glutathione, pH=8.0 in the elution buffer.
Storage Instruction	Store at -80°C. Aliquot to avoid repeated freezing and thawing.
Note	Best use within three months from the date of receipt of this protein.

Applications

- Enzyme-linked Immunoabsorbent Assay
- Western Blot (Recombinant protein)
- Antibody Production
- Protein Array

Gene Info — ACTG2

Entrez GeneID [72](#)

GeneBank Accession# [NM_001615](#)

Protein Accession# [NP_001606](#)

Gene Name ACTG2

Gene Alias ACT, ACTA3, ACTE, ACTL3, ACTSG

Gene Description actin, gamma 2, smooth muscle, enteric

Omim ID [102545](#)

Gene Ontology [Hyperlink](#)

Gene Summary Actins are highly conserved proteins that are involved in various types of cell motility, and maintenance of the cytoskeleton. In vertebrates, three main groups of actin isoforms, alpha, beta and gamma have been identified. The alpha actins are found in muscle tissues and are a major constituent of the contractile apparatus. The beta and gamma actins co-exist in most cell types as components of the cytoskeleton, and as mediators of internal cell motility. Actin, gamma 2, encoded by this gene, is a smooth muscle actin found in enteric tissues. [provided by RefSeq]

Other Designations actin, gamma 2|actin-like protein|alpha-actin 3|smooth muscle gamma actin

Pathway

- [Vascular smooth muscle contraction](#)

Disease

- [Cholestasis](#)
- [Pre-Eclampsia](#)
- [Pregnancy Complications](#)