

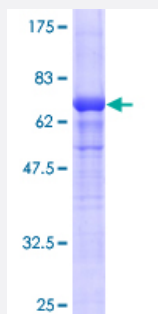
Full-Length

# ACTG2 (Human) Recombinant Protein (P01)

Catalog # H00000072-P01

Size 25 ug, 10 ug

## Applications



## Specification

### Product Description

Human ACTG2 full-length ORF ( AAH12617, 1 a.a. - 376 a.a.) recombinant protein with GST-tag at N-terminal.

### Sequence

MCEEETALVCDNGSGLCKAGFAGDDAPRAVFPSVGRPRHQGVVMGMGQKDSYVGDEAQS  
RGILTLKYPIEHGIITNWDDMEKWHHSFYNELRVAPEEHPTLLTEAPLNPKANREKMTQIMFET  
FNVPAMYVAIQAVLSLYASGRRTGIVLDSGDGVTHNVPIYEGYALPHAIMRLDLAGRDLTDYLMKIL  
TERGYFSVTTAERENRDIKEKLCYVALDFENEMATAASSSSLEKSYELPDGQVITIGNERFRC  
PETLFQPSFIGMESAGIHETTYNSIMKCDIDIRKDLYANNVLSGGTTMYPGIADRMQKEIT  
ALAPSTMKIKIAPPERKYSVWIGGSILASLSTFQQMWISKPEYDEAGPSVHRKCF

### Host

Wheat Germ (in vitro)

### Theoretical MW (kDa)

66.88

### Interspecies Antigen Sequence

Mouse (100); Rat (100)

### Preparation Method

[in vitro wheat germ expression system](#)

### Purification

Glutathione Sepharose 4 Fast Flow

### Quality Control Testing

12.5% SDS-PAGE Stained with Coomassie Blue.

### Storage Buffer

50 mM Tris-HCl, 10 mM reduced Glutathione, pH=8.0 in the elution buffer.

**Storage Instruction**

Store at -80°C. Aliquot to avoid repeated freezing and thawing.

**Note**

Best use within three months from the date of receipt of this protein.

## Applications

- Enzyme-linked Immunoabsorbent Assay
- Western Blot (Recombinant protein)
- Antibody Production
- Protein Array

## Gene Info — ACTG2

**Entrez GeneID**[72](#)**GeneBank Accession#**[BC012617](#)**Protein Accession#**[AAH12617](#)**Gene Name**

ACTG2

**Gene Alias**

ACT, ACTA3, ACTE, ACTL3, ACTSG

**Gene Description**

actin, gamma 2, smooth muscle, enteric

**Omim ID**[102545](#)**Gene Ontology**[Hyperlink](#)**Gene Summary**

Actins are highly conserved proteins that are involved in various types of cell motility, and maintenance of the cytoskeleton. In vertebrates, three main groups of actin isoforms, alpha, beta and gamma have been identified. The alpha actins are found in muscle tissues and are a major constituent of the contractile apparatus. The beta and gamma actins co-exist in most cell types as components of the cytoskeleton, and as mediators of internal cell motility. Actin, gamma 2, encoded by this gene, is a smooth muscle actin found in enteric tissues. [provided by RefSeq]

**Other Designations**

actin, gamma 2|actin-like protein|alpha-actin 3|smooth muscle gamma actin

## Pathway

- [Vascular smooth muscle contraction](#)

## Disease

- [Cholestasis](#)
- [Pre-Eclampsia](#)
- [Pregnancy Complications](#)