

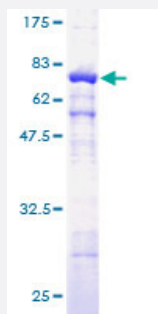
Full-Length

# ACTG1 (Human) Recombinant Protein (P01)

Catalog # H00000071-P01

Size 25 ug, 10 ug

## Applications



## Specification

### Product Description

Human ACTG1 full-length ORF ( AAH53572, 1 a.a. - 375 a.a.) recombinant protein with GST-tag at N-terminal.

### Sequence

MEEEIALVIDNGSGMCKAGFAGDDAPRAVFPSVGRPRHQGVMMGMGQKDSYVGDEAQS KRG  
ILTLKYP IEHGMVTNWDDMEKIWHHTFYNELRVAP EEPVLLTEAPLNPKANREKMTQIMFETNTP  
AMYVAIQAVLSLYASGR TTGVMDSGDGVTH TVPIYEGYALPHAILRLDLAGRDLTDYLMKILTERGY  
SFTTTAERENRDIKEKLCYVALDFEQEMATAASSSSLEKSYELPDGQVITIGNERFRCPEALFQPS  
FLGMESCGIHETTFNSIMKCDVDIRKDL YANTVLSGGTTMYPGIADRMQKEITALAPSTMKIKIAPPE  
RKYSVWIGGSILASLSTFQQMWISKQEYDESGPSVHRKCF

### Host

Wheat Germ (in vitro)

### Theoretical MW (kDa)

66.99

### Preparation Method

[in vitro wheat germ expression system](#)

### Purification

Glutathione Sepharose 4 Fast Flow

### Quality Control Testing

12.5% SDS-PAGE Stained with Coomassie Blue.

### Storage Buffer

50 mM Tris-HCl, 10 mM reduced Glutathione, pH=8.0 in the elution buffer.

### Storage Instruction

Store at -80°C. Aliquot to avoid repeated freezing and thawing.

## Note

Best use within three months from the date of receipt of this protein.

## Applications

- Enzyme-linked Immunoabsorbent Assay
- Western Blot (Recombinant protein)
- Antibody Production
- Protein Array

## Gene Info — ACTG1

Entrez GeneID [71](#)

GeneBank Accession# [BC053572](#)

Protein Accession# [AAH53572](#)

Gene Name ACTG1

Gene Alias ACT, ACTG, DFNA20, DFNA26

Gene Description actin, gamma 1

Omim ID [102560 604717](#)

Gene Ontology [Hyperlink](#)

**Gene Summary** Actins are highly conserved proteins that are involved in various types of cell motility, and maintenance of the cytoskeleton. In vertebrates, three main groups of actin isoforms, alpha, beta and gamma have been identified. The alpha actins are found in muscle tissues and are a major constituent of the contractile apparatus. The beta and gamma actins co-exist in most cell types as components of the cytoskeleton, and as mediators of internal cell motility. Actin, gamma 1, encoded by this gene, is a cytoplasmic actin found in nonmuscle cells. [provided by RefSeq]

**Other Designations** actin, cytoplasmic 2|actin, gamma 1 propeptide|cytoskeletal gamma-actin

## Pathway

- [Adherens junction](#)

- [Arrhythmogenic right ventricular cardiomyopathy \(ARVC\)](#)
- [Focal adhesion](#)
- [Hypertrophic cardiomyopathy \(HCM\)](#)
- [Leukocyte transendothelial migration](#)
- [Pathogenic Escherichia coli infection - EHEC](#)
- [Regulation of actin cytoskeleton](#)
- [Tight junction](#)
- [Vibrio cholerae infection](#)