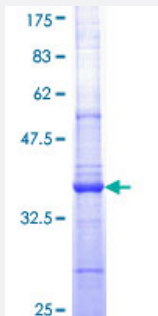


# ACPP (Human) Recombinant Protein (Q01)

Catalog # H00000055-Q01

Size 25 ug, 10 ug

## Applications



## Specification

<b>Product Description</b>	Human ACPP partial ORF ( AAH07460, 310 a.a. - 418 a.a.) recombinant protein with GST-tag at N-terminal.
<b>Sequence</b>	YASCHLTELYFEKGEYFVEMYRNETQHEPYPLMLPGCSPSCPLERFAELAGPVIPQDWSTECMT TNSHQVLKVIFAVAFCLISAVLMVLLFIHIRRGLCWQRESYGN
<b>Host</b>	Wheat Germ (in vitro)
<b>Theoretical MW (kDa)</b>	37.62
<b>Interspecies Antigen Sequence</b>	Mouse (68); Rat (67)
<b>Preparation Method</b>	<a href="#">in vitro wheat germ expression system</a>
<b>Purification</b>	Glutathione Sepharose 4 Fast Flow
<b>Quality Control Testing</b>	12.5% SDS-PAGE Stained with Coomassie Blue.
<b>Storage Buffer</b>	50 mM Tris-HCl, 10 mM reduced Glutathione, pH=8.0 in the elution buffer.
<b>Storage Instruction</b>	Store at -80°C. Aliquot to avoid repeated freezing and thawing.
<b>Note</b>	Best use within three months from the date of receipt of this protein.

## Applications

- Enzyme-linked Immunoabsorbent Assay
- Western Blot (Recombinant protein)
- Antibody Production
- Protein Array

## Gene Info — ACP3

Entrez GeneID	<a href="#">55</a>
GeneBank Accession#	<a href="#">BC007460</a>
Protein Accession#	<a href="#">AAH07460</a>
Gene Name	ACP3
Gene Alias	ACP-3, ACP3, PAP
Gene Description	acid phosphatase, prostate
Omim ID	<a href="#">171790</a>
Gene Ontology	<a href="#">Hyperlink</a>
Gene Summary	This gene encodes an enzyme that catalyzes the conversion of orthophosphoric monoester to alcohol and orthophosphate. It is synthesized under androgen regulation and is secreted by the epithelial cells of the prostate gland. An alternatively spliced transcript variant encoding a longer isoform has been found for this gene. This isoform contains a transmembrane domain and is localized in the plasma membrane-endosomal-lysosomal pathway. [provided by RefSeq]
Other Designations	prostatic acid phosphatase

## Pathway

- [gamma-Hexachlorocyclohexane degradation](#)
- [Riboflavin metabolism](#)

## Disease

- [Tobacco Use Disorder](#)