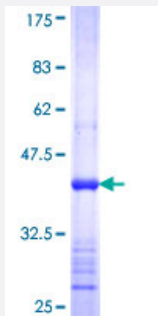


# ABR (Human) Recombinant Protein (Q01)

Catalog # H00000029-Q01

Size 25 ug, 10 ug

## Applications



## Specification

<b>Product Description</b>	Human ABR partial ORF ( NP_068781, 750 a.a. - 859 a.a.) recombinant protein with GST-tag at N-terminal.
<b>Sequence</b>	PAAKENCMHLLRSLPDPNLITFLFLLLEHLKRVAEKEPINKMSLHNLATVFGPTLLRPSEVESKAH LTSAADIWSDVMAQVQVLLYYLQHPPISFAELKRNTLYFSTDV
<b>Host</b>	Wheat Germ (in vitro)
<b>Theoretical MW (kDa)</b>	37.84
<b>Interspecies Antigen Sequence</b>	Mouse (100); Rat (100)
<b>Preparation Method</b>	<a href="#">in vitro wheat germ expression system</a>
<b>Purification</b>	Glutathione Sepharose 4 Fast Flow
<b>Quality Control Testing</b>	12.5% SDS-PAGE Stained with Coomassie Blue.
<b>Storage Buffer</b>	50 mM Tris-HCl, 10 mM reduced Glutathione, pH=8.0 in the elution buffer.
<b>Storage Instruction</b>	Store at -80°C. Aliquot to avoid repeated freezing and thawing.
<b>Note</b>	Best use within three months from the date of receipt of this protein.

## Applications

- Enzyme-linked Immunoabsorbent Assay
- Western Blot (Recombinant protein)
- Antibody Production
- Protein Array

## Gene Info — ABR

Entrez GeneID [29](#)

GeneBank Accession# [NM\\_021962](#)

Protein Accession# [NP\\_068781](#)

Gene Name ABR

Gene Alias FLJ45954, MDB

Gene Description active BCR-related gene

Omim ID [155255](#) [600365](#)

Gene Ontology [Hyperlink](#)

**Gene Summary** This gene encodes a protein that is similar to the protein encoded by the breakpoint cluster region gene located on chromosome 22. The protein encoded by this gene contains a GTPase-activating protein domain, a domain found in members of the Rho family of GTP-binding proteins. Functional studies in mice determined that this protein plays a role in vestibular morphogenesis, suggesting that Rho-related GTPases help coordinate motor skills and balance. Alternatively spliced transcript variants that encode different isoforms have been reported for this gene. [provided by RefSeq]

**Other Designations** active breakpoint cluster region-related protein

## Disease

- [Tobacco Use Disorder](#)