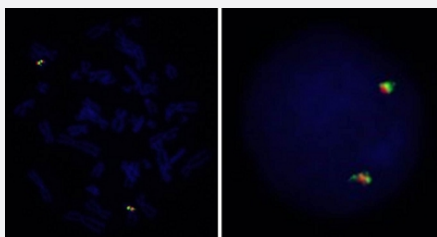


CREB3L1 Split FISH Probe

Catalog # FS0049

Size 200 uL, 100 uL

Applications



Hybridization position of the probes on the chromosome.

Hybridization position of the probes on the chromosome.

Specification

Product Description

Labeled FISH probes for identification of gene split using Fluorescent In Situ Hybridization Technique. ([Technology](#)).

Probe 1

Name: CREB3L1
Size: Approximately 450kb
Fluorophore: TexRed
Location: 11q11.2

Probe 2

Name: CREB3L1
Size: Approximately 790kb
Fluorophore: FITC
Location: 11q11.2

Origin

Human

Source	Genomic DNA
Reactivity	Human
Form	Liquid
Notice	We strongly recommend the customer to use FFPE FISH PreTreatment Kit 1 (Catalog #: KA2375 or KA2691) for the pretreatment of Formalin-Fixed Paraffin-Embedded (FFPE) tissue sections.
Regulation Status	For research use only (RUO)
Quality Control Testing	Representative images of normal human cell (lymphocyte) stain with the dual color FISH probe. The left image is chromosomes at metaphase, and the right image is an interphase nucleus.
Supplied Product	DAPI Counterstain (1500 ng/mL) 125 uL for each 100 uL FISH Probe
Storage Instruction	Store at 4°C in the dark.
Note	Hybridization position of the probes on the chromosome. Hybridization position of the probes on the chromosome.

Applications

- Fluorescent In Situ Hybridization (Cell)

[Protocol Download](#)

Gene Info — CREB3L1

Entrez GeneID	90993
Gene Name	CREB3L1
Gene Alias	OASIS
Gene Description	cAMP responsive element binding protein 3-like 1
Gene Ontology	Hyperlink
Other Designations	BBF-2 homologold astrocyte specifically induced substance

Pathway

- [Melanogenesis](#)

- [Prostate cancer](#)