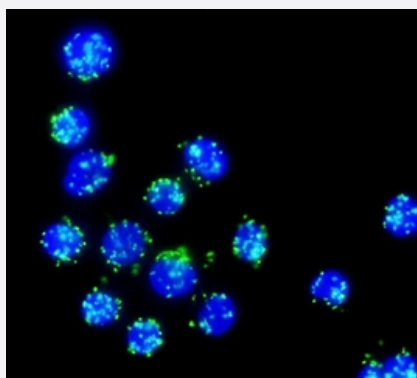


mutaFISH™ EGFRwt RNA Probes

Catalog # FP0023

Size 1 Probe Set

Applications



mutation specific, Fluorescence *In Situ* Hybridization (Cells)

mutaFISH™ staining was performed *in situ* in PC-9 cells. EGFR gene was detected via green signal (FITC).

Specification

Product Description

mutaFISH™ EGFRwt RNA Probes is designed to detect human EGFR gene on single strand RNA in cells using padlock probe and *in situ* rolling-circle amplification technology.

Reactivity

Human

Supplied Product

Content:

1. RT EGFR Primer
2. mutaFISH™ EGFRwt RNA Probe
3. Detection Probe-FITC

Technology

[mutaFISH™ \(mutation-specific Fluorescence *In Situ* Hybridization\)](#)

Comparison

[FISH Probes vs mutaFISH™ Probes](#)

Fluorophore

FITC (Excitation Peak (nm): 495; Emission Peak (nm): 519)

Probe Position

Regulatory Status

For research use only (RUO)

Storage Instruction

Store at -20°C.
Aliquot to avoid repeated freezing and thawing.

Note

We recommend mutaFISH™ RNA Accessory Kit (Catalog #: [KA4915](#)) which provides necessary reagents and enzymes for *in situ* reverse transcription, RNA digestion, mutaFISH™ hybridization, ligation and amplification prior to mutaFISH™.

Video

Applications

- mutation specific, Fluorescence *In Situ* Hybridization (Cells)

mutaFISH™ staining was performed *in situ* in PC-9 cells. EGFR gene was detected via green signal (FITC).