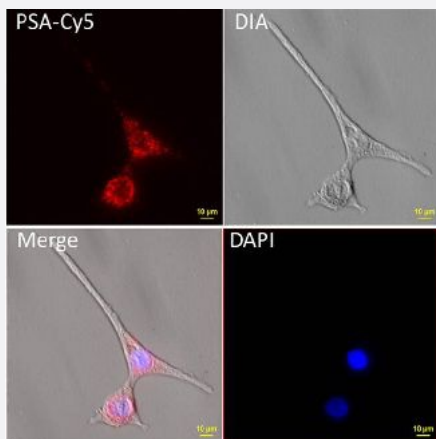


# mutaFISH™ PSAwt RNA Probes

Catalog # FP0018

Size 1 Probe Set

## Applications



### mutation specific, Fluorescence *In Situ* Hybridization (Cells)

mutaFISH™ staining was performed *in situ* in human LNCaP cells. PSA was detected via red signal (Cy5).

## Specification

### Product Description

mutaFISH™ PSAwt RNA Probes is designed to detect human PSA gene on single strand RNA in cells using padlock probe and *in situ* rolling-circle amplification technology.

### Reactivity

Human

### Supplied Product

Content:

1. RT PSA Primer
2. mutaFISH™ PSAwt RNA Probe
3. Detection Probe-Texas Red X

### Technology

[mutaFISH™ \(mutation-specific Fluorescence \*In Situ\* Hybridization\)](#)

### Comparison

[FISH Probes vs mutaFISH™ Probes](#)

### Fluorophore

Texas Red X (Excitation Peak (nm): 595; Emission Peak 613)

### Probe Position

Regulatory Status	For research use only (RUO)
Storage Instruction	Store at -20°C. Aliquot to avoid repeated freezing and thawing.
Note	We recommend mutaFISH™ RNA Accessory Kit (Catalog #: <a href="#">KA4915</a> ) which provides necessary reagents and enzymes for <i>in situ</i> reverse transcription, RNA digestion, mutaFISH™ hybridization, ligation and amplification prior to mutaFISH™.
Video	

## Applications

- mutation specific, Fluorescence *In Situ* Hybridization (Cells)

mutaFISH™ staining was performed *in situ* in human LNCaP cells. PSA was detected via red signal (Cy5).

## Gene Info — KLK3

Entrez GeneID	<a href="#">354</a>
Gene Name	KLK3
Gene Alias	APS, KLK2A1, PSA, hK3
Gene Description	kallikrein-related peptidase 3
Omim ID	<a href="#">176820</a>
Gene Ontology	<a href="#">Hyperlink</a>

**Gene Summary**

Kallikreins are a subgroup of serine proteases having diverse physiological functions. Growing evidence suggests that many kallikreins are implicated in carcinogenesis and some have potential as novel cancer and other disease biomarkers. This gene is one of the fifteen kallikrein subfamily members located in a cluster on chromosome 19. Its protein product is a protease present in seminal plasma. It is thought to function normally in the liquefaction of seminal coagulum, presumably by hydrolysis of the high molecular mass seminal vesicle protein. Serum level of this protein, called PSA in the clinical setting, is useful in the diagnosis and monitoring of prostatic carcinoma. Alternate splicing of this gene generates several transcript variants encoding different isoforms. [provided by RefSeq]

**Other Designations**

P-30 antigen|gamma-seminoprotein|kallikrein 3, (prostate specific antigen)|prostate specific antigen|semenogelase|seminin

**Pathway**

- [Pathways in cancer](#)
- [Prostate cancer](#)

**Disease**

- [Breast cancer](#)
- [Breast Neoplasms](#)
- [Cardiovascular Diseases](#)
- [Diabetes Mellitus](#)
- [Disease Progression](#)
- [Edema](#)
- [Genetic Predisposition to Disease](#)
- [Lymphatic Metastasis](#)
- [Neoplasm Invasiveness](#)
- [Neoplasm Metastasis](#)
- [Neoplasm Recurrence](#)
- [Neoplasms](#)
- [Prostate cancer](#)

- [Prostatic Hyperplasia](#)
- [Prostatic Neoplasms](#)